



 **PODARTIS**
clinically tested footwear

FALL / WINTER 2023

Podartis specializes in the production of footwear, insoles, stockings, braces and materials for the prevention and treatment of the main walking pathologies such as hallux valgus, hammer toes, rheumatic foot, diabetic foot and post foot surgery.

The company's flagship product, the result of more than 30 years of research, is its cutting-edge solutions for the diabetic foot.

Every product made by the company is rigorously clinically tested to meet the highest quality standards in the sector and guarantee maximum protection and comfort.

Continuous product innovation has its source in a constant commitment to research, linked to medical-scientific comparisons and collaborations with some of the most authoritative international experts.

The patents that characterize Podartis products are direct evidence of the company's mission: to help people walk well to live better.

NEW COLLECTION

 **PODARTIS**
clinically tested footwear

NEW COLLECTION

FALL / WINTER 2023

WOMEN'S collection

- 10. SANDY line
- 22. SANDY AIR line
- 26. ASOLO line
- 30. CLASSIC line
- 41. SNEAKERS CITY line
- 44. SNEAKERS CHIC line
- 48. DEAMBULO line
- 50. ACTIVITY line

MEN'S collection

- 60. CLASSIC line
- 64. DEAMBULO line
- 66. ACTIVITY line



KEY CONCEPTS - 2023/2024 FW COLLECTION

QUALITY OF MATERIALS

A cornerstone of the new collection is the use of textile materials (boiled wools, felts, velvets, nylons) exclusively from high-quality Italian manufactures, linked to the world of the most prestigious made in Italy.



COMFORT AND SOFTNESS

We have specifically used, even in men's products, leathers with high softness characteristics, in order to ensure superior comfort that is distinguishable already at the first consumer's approach to our footwear.

USE OF ZIPPER CLOSURES

We are intensifying, with the intention of increasing it in the coming seasons, the use of closures zippers to facilitate and speed up the act of putting on and taking off the shoe.

In this collection they are equipped with ZIP inside, in the women's area, the articles Alyssa II, Alyna, Madison zipper black and burgundy, Beverly, and Brittany.

In the men's sphere we find the zipper in the articles Darwin DCS zipper dark brown, and Freedom Evo mid WR black.

REFRESH MATERIALS DEAMBULO LINE

We have provided, for both men and women, material variants with a winter vocation for one of our iconic technique/pathological product areas such as the Deambulo, in order to broaden the use of these specific articles also in contexts typically associated with winter seasons (rain and humidity).



COLORS CONCEPT - FW COLLECTION 2023/2024

After a period of immense challenge, in fall winter 23/24 the consumers will focus on building a future that looks at normality and the pleasure of living without restrictions.

Color and material trends encapsulate the diverse influences of the lifestyle and the various motivational forces that will drive consumption as we head toward 2024, which can be summarized in the themes of:

Wellness, Discovery, and Timeless.

WELL-BEING

The continued desire to relax and recharge outdoors will increase the the importance of natural, calming colors (clay brown, green moss) and timeless classic neutrals that connect with the theme of longevity. It is the theme that finds particular expression in the men's collection in the **clay brown** (Botero and Darwin) and **army green** (Hero, DCS Sport, Next).

DISCOVERY

As commercial space travel evolves and space tourism becomes a reality, the colors of the universe will excite and inspire us.

It is the futuristic style that influences colors, materials, and technologies. Colors expression of this fall/winter 2023/24 trend will be: astro dust, the color that evokes the dusty and desolate landscapes of Mars, and galactic cobalt, a bright shade of blue that proposed in velvets evokes the shadows and darkness of space. This is the theme of the nylon quilts inspired by space suits.

TIMELESS

The post-pandemic era heralds a return of classic colors without time, as if to define the beginning of a new era. Browns and dark browns return as protagonists in the women's collection. The thousand depths of black assume a dominant character in the expression of the essence of elegance.

Well-being



Discovery



PODARTIS VEGAN

More and more customers are demanding vegan footwear, whether for ethical reasons (use of “cruelty free” footwear, i.e., footwear that does not use materials of animal origin), or to obviate allergies to metals, or for simple desire to be in line with the green dynamics now ubiquitous in our society.

The range of Vegan items in the women’s collection includes **6 slippers Alipes , 3 Via variants, and 3 Zephyr variants.**

In the men’s collection are Vegan items the **Hero militar green, Next Evo army green, Next Evo black, Zephyr black, and One Evo Velcro black.**



PODARTIS GOES GREEN

The absolute necessity of sustainable and conscious, in the context of the materials used in collections, is more than ever a duty and a commitment in the face of the sudden changes taking place at the climatic environment.

Here are the main steps in the area of sustainability featured in the collection:

- We use hides from certified tanneries LGW GOLD.

The LWG certification is a mark of guarantee for companies operating in the leather world, namely tanneries. It is a recognition that rewards companies in the sector that manage in system perspective the environmental impact and sustainable economy.

This environmental audit protocol was developed by brands and manufacturers leather, with input from NGOs such as WWF and Greenpeace. It is updated regularly to ensure that it remains relevant and takes into account the needs and the evolution of the industry.

- We use raw materials from suppliers with 100% green energy sources.

- The article Hero Evo militar green (PA30069) has a vegan microfiber upper that is certified by INESCOP (verified by spectroscopy with infrared). These microfibers are products of the latest generation that stand out for their breathability, light weight, and high durability over time. Thanks to their properties of breathability and absorption, these products eliminate moisture, odors, and improve comfort and hygiene.

- In the 4 items of the Asolo line, offered for the first time in the autumn/winter, the footbed is lined with the nappa leather bio-compatible antibacterial green tech, made using a source of derivatives from corn processing. This material has high breathability characteristics, is odorless, washable and completely recyclable.



ANTIBACTERIAL GREEN TECH



The new footbed specifically for the Asolo Line covered in organic napa leather made from corn.

Technological and biosustainable fibers to improve our life on the planet.

WOMEN'S
COLLECTION

FALL
WINTER
2023



SANDY LINE



Features

The Sandy line aims for maximum functionality, adapting to the foot of each patient.

Podartis **Seamless Technology** reduces the presence of noticeable seams within the product to avoid painful chafing and ensure maximum protection. All inner linings feature high-density materials for better comfort and feature, in the layer in contact with the foot, Lycra® Dermocompatible.

Width **10,5** | Biomechanical outsole **FLEXIBLE**



The new Sandy Evo Biomechanical Outsole protects the joints of the foot better more during the gait phases and ensures a performant redistribution of pressures. The 20mm physiological heel ensures the correct posture of the patient.

The high-density Eva + PU compound of the Sandy footbed provides continuous step cushioning and effective protection especially to rheumatic patients. Dermocompatible microfiber cover.

The 10.5 fitting combined with the products' self-fit ensures an excellent fit for even the most demanding feet.

SEAMLESS TECHNOLOGY

Less seams. Less pain.

FLEXPELL®

Self-molding upper.



OUTSOLE FOCUS

- Biomechanical rocker / Protects joints
- 20 mm heel / correct posture
- Non-slip inserts in the tread



SANDY / SABOT



NEW

JANET NILE BLACK SR102384

SIZE RANGE: 35-42 / WIDTH: 10,5
OUTSOLE: Flexible
Semi-glossy printed suede + stretch



NEW

JANET STARS DARK GREEN SR102385

SIZE RANGE: 35-42 / WIDTH: 10,5
OUTSOLE: Flexible
Metallic leather + stretch



NEW

JANET STARS CARAMEL GOLD SR102386

SIZE RANGE: 35-42 / WIDTH: 10,5
OUTSOLE: Flexible
Metallic leather + stretch

SANDY / SABOT



NEW

PATRIZIA NIPPON BRONZE SR103829

SIZE RANGE: 35-42 / WIDTH: 10,5
OUTSOLE: Flexible
Metallic nappa leather + stretch velvet



NEW

PATRIZIA NIPPON DARK STEEL SR103833

SIZE RANGE: 35-42 / WIDTH: 10,5
OUTSOLE: Flexible
Metallic nappa leather + stretch velvet



NEW

PATRIZIA HAIR MOHOGANY SR103827

SIZE RANGE: 35-42 / WIDTH: 10,5
OUTSOLE: Flexible
Metallic nappa leather + stretch pony skin



NEW

JANET STARS BORDEAUX SR102387

SIZE RANGE: 35-42 / WIDTH: 10,5
OUTSOLE: Flexible
Metallic leather + stretch



NEW

JANET STARS GUNMETAL SR102388

SIZE RANGE: 35-42 / WIDTH: 10,5
OUTSOLE: Flexible
Metallic leather + stretch



NEW

JANET STARS PETROL BLUE SR102389

SIZE RANGE: 35-42 / WIDTH: 10,5
OUTSOLE: Flexible
Metallic leather + stretch



NEW

PATRIZIA HAIR BLACK SR103828

SIZE RANGE: 35-42 / WIDTH: 10,5
OUTSOLE: Flexible
Metallic nappa leather + stretch pony skin



NEW

PATRIZIA HAIR GREEN GREY SR103826

SIZE RANGE: 35-42 / WIDTH: 10,5
OUTSOLE: Flexible
Metallic nappa leather + stretch pony skin

SANDY / SABOT



NEW

ARIANNA LEAVES BRONZE SR109557

SIZE RANGE: 35-42 / WIDTH: 10,5
OUTSOLE: Flexible
Nappa metal + metallic 3D stretch print



NEW

ARIANNA LEAVES BLACK SR109558

SIZE RANGE: 35-42 / WIDTH: 10,5
OUTSOLE: Flexible
Nappa metal + metallic 3D stretch print

SANDY / SABOT



NEW

ARIANNA SPARKS DARK BLU SR109542

SIZE RANGE: 35-42 / WIDTH: 10,5
OUTSOLE: Flexible
Printed suede + iridescent stretch print



NEW

ARIANNA SPARKS DARK GREY SR109543

SIZE RANGE: 35-42 / WIDTH: 10,5
OUTSOLE: Flexible
Printed suede + iridescent stretch print



NEW

ARIANNA WOOL EVO SMOKE GREY SR109559

SIZE RANGE: 35-42 / WIDTH: 10,5
OUTSOLE: Flexible
Patent leather + stretch wool



NEW

ARIANNA WOOL EVO BLUE SR109553

SIZE RANGE: 35-42 / WIDTH: 10,5
OUTSOLE: Flexible
Patent leather + stretch wool



NEW

ARIANNA WOOL EVO PLUM SR109561

SIZE RANGE: 35-42 / WIDTH: 10,5
OUTSOLE: Flexible
Patent leather + stretch wool



NEW

ARIANNA SPARKS BORDEAUX SR109546

SIZE RANGE: 35-42 / WIDTH: 10,5
OUTSOLE: Flexible
Printed suede + iridescent stretch print



SANDY / **TWO STRAPS VELVET SLIPPER**



NEW

ALIPES VELVET EXOTIC DARK BEIGE SR10195

SIZE RANGE: 35-42 / WIDTH: 10,5
 OUTSOLE: Flexible
 Velvet + stretch velvet



NEW

ALIPES VELVET EXOTIC GREY SR10196

SIZE RANGE: 35-42 / WIDTH: 10,5
 OUTSOLE: Flexible
 Velvet + stretch velvet



NEW

ALIPES VELVET EXOTIC DARK ROSE SR10201

SIZE RANGE: 35-42 / WIDTH: 10,5
 OUTSOLE: Flexible
 Velvet + stretch velvet



NEW

ALIPES VELVET ROYAL NIGHT BLUE SR10202

SIZE RANGE: 35-42 / WIDTH: 10,5
 OUTSOLE: Flexible
 Velvet + stretch velvet



NEW

ALIPES VELVET ROYAL GREY SR10203

SIZE RANGE: 35-42 / WIDTH: 10,5
 OUTSOLE: Flexible
 Velvet + stretch velvet



NEW

ALIPES VELVET ROYAL PAPRIKA SR10204

SIZE RANGE: 35-42 / WIDTH: 10,5
 OUTSOLE: Flexible
 Velvet + stretch velvet

SANDY / **TWO STRAPS VELVET SLIPPER**



NEW

ALIPES GALAXY SILVER PETROL SR10189

SIZE RANGE: 35-42 / WIDTH: 10,5
 OUTSOLE: Flexible
 Metallic print nappa + stretch



NEW

ALIPES GALAXY BRONZE BROWN SR10191

SIZE RANGE: 35-42 / WIDTH: 10,5
 OUTSOLE: Flexible
 Metallic print nappa + stretch



SANDY / TWO STRAPS LEATHER SLIPPER



NEW

ALIPAD FLUX DARK BLUE SR10192

SIZE RANGE: 35-42 / WIDTH: 10,5
OUTSOLE: Flexible
Printed satin leather



NEW

ALIPAD FLUX DARK GREEN SR10193

SIZE RANGE: 35-42 / WIDTH: 10,5
OUTSOLE: Flexible
Printed satin leather



CARRY OVER
SS22

ALIPAD FLUX DARK SILVER SR10194

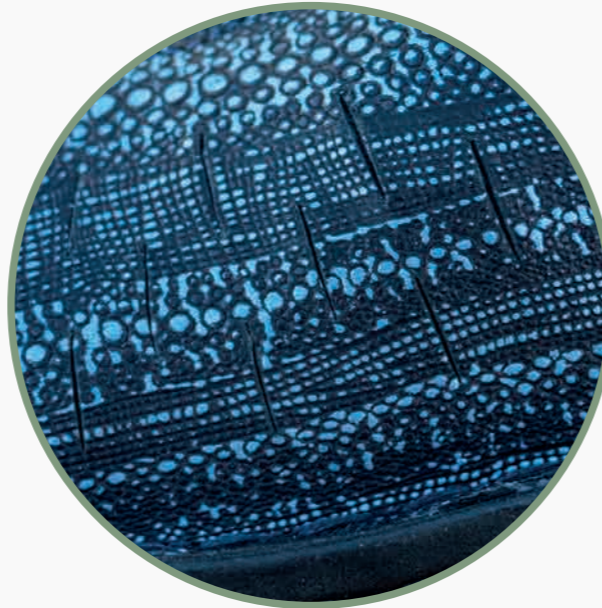
SIZE RANGE: 35-42 / WIDTH: 10,5
OUTSOLE: Flexible
Printed satin leather

FOCUS ALIPAD

Debuting in this collection is the slipper two-velcro ALIPAD.

The cut-out design on the medial side is designed for mild toe deformities.

An aesthetically cleaner solution for the most look-conscious consumers.



SANDY / SINGLE VELCRO SLIPPER



NEW

SUSAN NILE BORDEAUX SR103834

SIZE RANGE: 35-42 / WIDTH: 10,5
OUTSOLE: Flexible
Semi-glossy printed suede + stretch



NEW

SUSAN NILE BLACK SR103837

SIZE RANGE: 35-42 / WIDTH: 10,5
OUTSOLE: Flexible
Semi-glossy printed suede + stretch



NEW

SUSAN GREASE DARK GREEN SR103839

SIZE RANGE: 35-42 / WIDTH: 10,5
OUTSOLE: Flexible
Semi-glossy printed suede + stretch



SANDY AIR LINE



Features

New line dedicated to people who work all day on their feet (catering, dental clinics, retail stores) and who need a restful benefit and reduction of the feeling of tired legs.

Width **10,5** | Biomechanical outsole **FLEXIBLE** 

The new Sandy Biomechanical Outsole protects the joints of the foot better more during the gait phases and ensures a performant redistribution of pressures. The 20mm physiological heel ensures the correct posture of the patient.

The high-density Eva + PU compound of the Sandy footbed provides continuous step cushioning and effective protection especially to rheumatic patients.

Dermocompatible microfiber cover.

The 10.5 fitting combined with the products' self-fit ensures an excellent fit for even the most demanding feet.

SEAMLESS TECHNOLOGY

Less seams. Less pain.

FLEXPELL®

Self-molding perforated upper. Maximum breathability.

CLOSURE

"one-handed locking system" with zipper



OUTSOLE FOCUS

- Biomechanical rocker / joints protection
- 20 Mm heel / correct posture



SANDY AIR / **SABOT WORK**



NEW

PATRIZIA AIR II WHITE SR103913

SIZE RANGE: 35-42 / WIDTH: 10,5
OUTSOLE: Flexible
Leather + micro-perforated stretch



NEW

PATRIZIA AIR II GREEN SR103914

SIZE RANGE: 35-42 / WIDTH: 10,5
OUTSOLE: Flexible
Leather + micro-perforated stretch



CARRY OVER
SS22

PATRIZIA AIR DARK BLUE SR103910

SIZE RANGE: 35-42 / WIDTH: 10,5
OUTSOLE: Flexible
Satin leather + micro-perforated stretch



ASOLO LINE



Features

The Asolo Line is a technical and stylistic evolution of Modula Line.

The new biomechanical Asolo outsole with wide non-slip sole, the refinement of the materials and the XL fitting make it ideal for the most demanding customers.

Width
11

Biomechanical outsole
SEMIRIGID



The sole is dual-density to provide cushioning and grip during walking. It is 40% semi-rigid to reduce stress joints and facilitate step biomechanics, while the 25 mm heel allows for better posture.

The technical principles of self-molding and seamless lining make it ideal for the most sensitive feet and to accommodate even major deformities.

The Asolo footbed is made of PU + EVA to ensure cushioning and effective comfort over time.



OUTSOLE FOCUS

- Shock-absorbing islands / High wear resistance
- 25mm heel / better posture



SEAMLESS TECHNOLOGY

Less seams. Less pain.

FLEXPELL®

Self-molding perforated upper.
Maximum breathability.

ASOLO / TWO STRAPS SLIPPER



NEW

ROMINA WINTER WOVEN GREEN SR631498

SIZE RANGE: 34-42 / WIDTH: 11
OUTSOLE: SEMIRIGID
Metallic intreccio print leather + stretch



NEW

ROMINA WINTER WOVEN DARK BLUE SR631496

SIZE RANGE: 34-42 / WIDTH: 11
OUTSOLE: SEMIRIGID
Metallic intreccio print leather + stretch

ASOLO / THREE STRAPS SLIPPER



NEW

CIPRO WOOL DARK GREEN SR115493

SIZE RANGE: 34-42 / WIDTH: 11
OUTSOLE: SEMIRIGID
Boiled wool + nabuck



NEW

CIPRO WOOL RUBY RED SR115494

SIZE RANGE: 34-42 / WIDTH: 11
OUTSOLE: SEMIRIGID
Boiled wool + suede



CLASSIC LINE



Features

The interpretation we have developed for the Classic segment follows the theme of basic and classic colors.

In line with post pandemic market, we propose a wide range of black variants modulated through the various materials (tassels, semi-gloss calfskins, patent leather glossy) and a return of variants in shades of brown and dark brown.

Width
10,5
11,5

Biomechanical outsole
FLEXIBLE



The new biomechanical Dana polyurethane outsole has in the tread two rubber lugs with non-slip textures.

This solution combines light weight with increased grip in the winter months on all surfaces, bringing improvements both in terms of style and performance compared to the previous Deva outsole.



OUTSOLE FOCUS

- Shock-absorbing islands / High wear resistance
- 25mm heel / better posture



SEAMLESS TECHNOLOGY

Less seams. Less pain.

FLEXPELL®

Self-moldable perforated upper.
Maximum breathability.

CLASSIC / **ELEGANT**



NEW

STEPHANIE II HAIR BLACK SR21836

SIZE RANGE: 34-42 / WIDTH: 11,5
OUTSOLE: Flexible
Semi-glossy nappa leather + stretch pony skin



NEW

STEPHANIE II UNIVERSE DARK BLUE SR21837

SIZE RANGE: 34-42 / WIDTH: 11,5
OUTSOLE: Flexible
Metallic print leather + stretch patent



NEW

STEPHANIE II LUX DARK BROWN SR21838

SIZE RANGE: 34-42 / WIDTH: 11,5
OUTSOLE: Flexible
Manta skin leather + stretch patent



NEW

LISA II BLACK SR218234

SIZE RANGE: 34-42 / WIDTH: 11,5
OUTSOLE: Flexible
Semi-glossy nappa leather + stretch



NEW

LISA II DARK GREY SR218235

SIZE RANGE: 34-42 / WIDTH: 11,5
OUTSOLE: Flexible
Leather + stretch





CLASSIC / **CASUAL CITY**



NEW

ATLANTA BLACK SR203622

SIZE RANGE: 35-41 / WIDTH: 10,5
OUTSOLE: Flexible
Semi-glossy nappa leather + stretch



NEW

ATLANTA DARK GREY SR203623

SIZE RANGE: 35-41 / WIDTH: 10,5
OUTSOLE: Flexible
Laminated leather + stretch patent leather



NEW

ANNA SHINE BLACK SR208225

SIZE RANGE: 35-41 / WIDTH: 10,5
OUTSOLE: Flexible
Satin suede + leather + stretch



NEW

ANNA PYTHON DARK BROWN SR208226

SIZE RANGE: 35-41 / WIDTH: 10,5
OUTSOLE: Flexible
Python paint + python stretch

CASUAL ZEPPA STAR

Captivating look

Made of a special compound light EVA made in Italy, it guarantees excellent abrasion resistance and **exceptional lightness**.

The **non-slip lug tread pattern** is perfect for winter use in any weather conditions.

The upper welt is made of leather coated with patent leather and has been specially developed and manufactured for Podartis by the best quality supply chains of **Made in Italy**.

CLASSIC / CASUAL ZEPPA STAR



NEW

STELLA PATENT BLACK SR201525

SIZE RANGE: 35-42 / WIDTH: 11,5
OUTSOLE: Flexible
Patent leather + stretch patent



NEW

SOPHIE PATENT BLACK SR201543

SIZE RANGE: 35-42 / WIDTH: 11,5
OUTSOLE: Flexible
Patent leather + stretch patent





CLASSIC / **CASUAL ZEPPA STAR**



NEW

ALYSSA II BLACK SR200447

SIZE RANGE: 35-42 / WIDTH: 11,5
OUTSOLE: Flexible
Stingray print leather + ribbed elastic



NEW

ALYNA BLACK SR200448

SIZE RANGE: 35-42 / WIDTH: 11,5
OUTSOLE: Flexible
Soft leather + elastic covered nappa



SNEAKERS COLLECTION



Features

From the need to introduce a “Fashion Sneaker” style, in line with the trends of the moment, Podartis has developed the Activity City line.

The Sneakers style associated with the Timing sole Rocker® for a physiological and natural stride has made it one of the best-selling lines of the recent seasons.

Width
10

Biomechanical outsole
SEMIRIGID



The Timing Rocker® Podartis sole with a 20 mm heel is to 70% semi-rigid and reduces the energy demand for stride, ensuring a smooth transition between the moment of contact and propulsion.

Ideal for dynamic people who enjoy living in an urban context.

SEAMLESS TECHNOLOGY
Less seams. Less pain.

CHIUSURA
“one-handed locking system” with zipper

OUTSOLE FOCUS



SNEAKERS COLLECTION / CITY



NEW

MADISON ZIP FLEUR BORDEAUX SR72507

SIZE RANGE: 36-41 / WIDTH: 10
OUTSOLE: SEMIRIGID
Leopard printed suede



NEW

MADISON ZIP GLAM BLACK SR72508

SIZE RANGE: 36-41 / WIDTH: 10
OUTSOLE: SEMIRIGID
Soft leather + iridescent nappa

Width **10** | Biomechanical outsole
FLEXIBLE



The new SOFTY sole made of made in Italy EVA foam, is a biomechanical outsole with extreme comfort, designed to reduce joint stress and rebalance pressure peaks.

The compound technology is designed to ensure lightness, softness and elasticity but also abrasion and tear resistance, and good grip on dry and wet surfaces.

OUTSOLE FOCUS



SNEAKERS COLLECTION / CITY



NEW

BEVERLY ZIP BLACK SR72509

SIZE RANGE: 36-41 / WIDTH: 10
OUTSOLE: Flexible
Soft leather



NEW

BRITTANY ZIP BLACK SR72502

SIZE RANGE: 36-41 / WIDTH: 10
OUTSOLE: Flexible
Soft leather + nylon



Width
11-12

Biomechanical outsole
SEMIRIGID



The Timing Rocker® Podartis sole with 20mm heel is to 70% semi-rigid and reduces the energy demand for stride, ensuring a smooth transition between the moment of contact and propulsion.

Ideal for dynamic people who like to experience the urban. Also ideal for diabetic or rheumatic patients at risk 2.

Podartis Seamless technology reduces the presence of seams visible inside the product to avoid painful chafing and ensure maximum protection.

All inner linings feature high-density materials for improved comfort.

The choice of 11-12 width allows even feet with significant deformities.

OUTSOLE FOCUS



SNEAKERS COLLECTION / CHIC



CARRY OVER FW22

SHELLY VELCRO LEATHER DARK GREY SR713476

SIZE RANGE: 35-41 / WIDTH: 11
OUTSOLE: SEMIRIGID
Nappa leather + iridescent leather + python stretch leather



CARRY OVER FW22

SHELLY LACE LEATHER DARK GREY SR713473

SIZE RANGE: 35-41 / WIDTH: 11
OUTSOLE: SEMIRIGID
Nappa leather + iridescent leather + python stretch leather

SNEAKERS

SHELLY LACE BORDEAUX





NEW

SHELLY VELCRO LEATHER BLACK SR713490

SIZE RANGE: 35-41 / WIDTH: 11
 OUTSOLE: Flexible
 Soft leather + stretch



NEW

SHELLY VELCRO BORDEAUX SR713491

SIZE RANGE: 35-41 / WIDTH: 11
 OUTSOLE: Flexible
 Metallic leather + stretch



NEW

ADELLE VELCRO GRIGIO EVO SR713119

SIZE RANGE: 35-41 / WIDTH: 11
 OUTSOLE: Flexible
 Suede + leather + nylon mesh



NEW

SHELLY LACE LEATHER BLACK SR713492

SIZE RANGE: 35-41 / WIDTH: 11
 OUTSOLE: Flexible
 Soft leather + stretch



NEW

SHELLY LACE BORDEAUX SR713493

SIZE RANGE: 35-41 / WIDTH: 11
 OUTSOLE: Flexible
 Metallic leather + stretch



365

ADELLE LACCIO BLACK SR713591

SIZE RANGE: 35-41 / WIDTH: 12
 OUTSOLE: SEMIRIGID
 Satin nappa



DEAMBULO LINE



Features

Classic, elegant and lightweight line, a best seller in stores, prized for its extreme comfort.

The sole is biomechanical to reduce stress joints and rebalance pressure peaks.

OUTSOLE FOCUS

- Flexible timing rocker® / non-slip pads
- Polyurethane tread with high resistance to abrasion



Width
12

Biomechanical outsole
FLEXIBLE



Fitting 12 makes them particularly suitable for feet that need even custom-made insoles of considerable thickness.

The Flexpell has a sandwich structure with an outer layer that is waterproof, a self-molding open-cell middle layer that ensures microcirculation of air, and an inner layer made of Dermocompatible Lycra.

All models are self-molding and the linings are made with seamless technology to contain slight deformities and snug fingers.



DEAMBULO / DEAMBULO



VIA LEATHER DARK BLUE SA24474

SIZE RANGE: 35-41 / WIDTH: 12
OUTSOLE: Flexible
Faux leather + stretch faux leather



VIA LEATHER DARK GREY SA24475

SIZE RANGE: 35-41 / WIDTH: 12
OUTSOLE: Flexible
Faux leather + stretch faux leather



VIA LEATHER BLACK SA24476

SIZE RANGE: 35-41 / WIDTH: 12
OUTSOLE: Flexible
Faux leather + stretch faux leather

ACTIVITY LINE



Features

For a decade, Podartis has been promoting movement and adapted physical activity. Studies clinical studies have shown that the shoes Activity significantly improve the parameters of gait and posture.

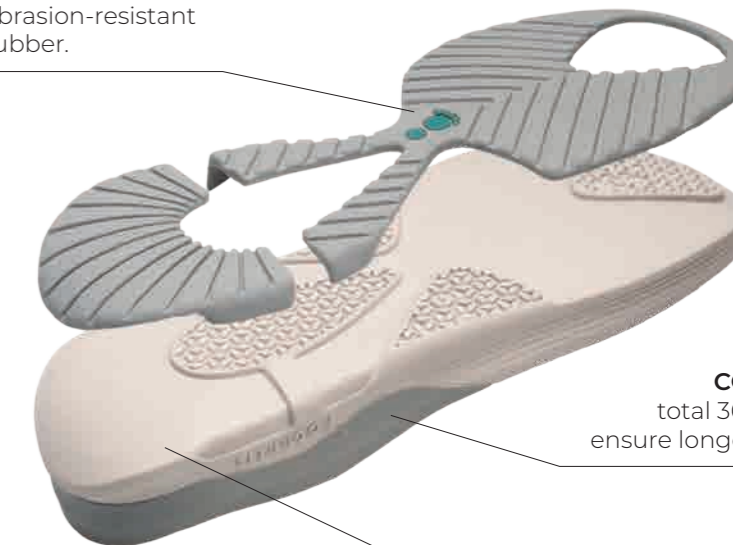
Key features: Seamless upper, stabilizing and extended spurs, various fits, semi-rigid biomechanical outsole.

Width
11-12

Biomechanical outsole
SEMIRIGID



OUTSOLE
made of highly
abrasion-resistant
rubber.



COVER
total 360° to
ensure longer life.

MIDSOLE
high density EVA.

- Seamless upper
- Stabilising and extended backcounters
- Different widths





NEW

GINGER VELCRO BLACK PA20163

SIZE RANGE: 35-41 / WIDTH: 11
OUTSOLE: SEMIRIGID
Suede + nylon + stretch



NEW

GINGER VELCRO GREY PA20164

SIZE RANGE: 35-41 / WIDTH: 11
OUTSOLE: SEMIRIGID
Satin suede + leather + suede stretch



NEW

GINGER LACE BLACK PA20165

SIZE RANGE: 35-41 / WIDTH: 11
OUTSOLE: SEMIRIGID
Suede + nylon + stretch



NEW

GINGER LACE GREY PA20166

SIZE RANGE: 35-41 / WIDTH: 11
OUTSOLE: SEMIRIGID
Satin suede + leather + suede stretch



ACTIVITY / **FANCY**



NEW

FANCY EVO GALAXY LACE BLUE PA20155

SIZE RANGE: 35-42 / WIDTH: 12
OUTSOLE: SEMIRIGID
Suede + stretch



NEW

FANCY EVO GALAXY VELCRO BLUE PA20156

SIZE RANGE: 35-42 / WIDTH: 12
OUTSOLE: SEMIRIGID
Suede + stretch



365

FANCY EVO BLACK PA20151

SIZE RANGE: 35-42 / WIDTH: 12
OUTSOLE: SEMIRIGID
Suede + nylon + stretch

ACTIVITY / **ZEPHYR**



NEW

ZEPHYR W MULTI BLACK PA20388

SIZE RANGE: 35-42 / WIDTH: 12
OUTSOLE: SEMIRIGID
Mesh + tecnofilm



NEW

ZEPHYR W DARK SILVER PA20389

SIZE RANGE: 35-42 / WIDTH: 12
OUTSOLE: SEMIRIGID
Mesh + tecnofilm



NEW

ZEPHYR BLACK PA20387

SIZE RANGE: 35-47 / WIDTH: 12
OUTSOLE: SEMIRIGID
Mesh + tecnofilm



NEW

FREEDOM EVO WR DARK NAVY PA34506

SIZE RANGE: 36-47 unisex / WIDTH: 12
OUTSOLE: SEMIRIGID
WR suede + rubberised leather + flexpell



CARRY OVER FW22

FREEDOM EVO WR BLACK PA34509

SIZE RANGE: 36-47 unisex / WIDTH: 12
OUTSOLE: SEMIRIGID
WR suede + rubberised leather + flexpell



MEN'S
COLLECTION

FALL
WINTER
2023



CLASSIC LINE



Features

The Classic Line for Men has always been one of Podartis' cornerstones to offer an elegant product for the business man combining technicality and functionality of the products.

Width
11-11,5
12
14

Biomechanical outsole
FLEXIBLE
SEMIRIGID
RIGID



The Timing Rocker® Podartis micromachined outsole is 70 percent semi-rigid and reduces the energy demand for stride, ensuring a smooth transition between the moment of contact and propulsion.

Ideal for juniors - seniors over 55, with reduced joint mobility and progressive bone decalcification. Particularly suitable for patients with diabetes or rheumatics in risk grade 2. To increase the performance of efficacy and protection, the use of treads among the best performing in terms of abrasion resistance and cushioning developed in collaboration with Vibram.

Podartis Seamless technology reduces the presence of visible seams inside the product to avoid painful chafing and ensure maximum protection. All inner linings feature high density for added comfort.

The choice of socks also accommodates feet with deformities major deformities, fully responding to all degrees of risk provided by the Triage International Diabetic and Rheumatic Triage.

- Shock-absorbing heel
- Vibram tread
- High abrasion resistance



OUTSOLE FOCUS

- Timing rocker / biomechanical outsole with micro
- Support structure / density 330km / m3
- Heel / pod50 density 240kg / m3 shore to 50



CLASSIC / **SABOT / TWO STRAPS**



365

MICHELANGELO BLACK SR104011

SIZE RANGE: 40-46 / WIDTH: 11
OUTSOLE: Flexible
Hammered calfskin



365

LEONARDO BLACK SR30281

SIZE RANGE: 40-46 / WIDTH: 12
OUTSOLE: Flexible
Hammered calfskin

CLASSIC / **ELEGANT**



NEW

BOTERO 11 CLAY BROWN SD370235

SIZE RANGE: 39-47 / WIDTH: 11,5
OUTSOLE: SEMIRIGID
Soft leather + flexpell



NEW

BOTERO 11 BLACK SD370291

SIZE RANGE: 39-47 / WIDTH: 11,5
OUTSOLE: SEMIRIGID
Soft leather + flexpell

CLASSIC / **CASUAL**



NEW

DARWIN VELCRO LEATHER BLACK SR320444

SIZE RANGE: 39-46 / WIDTH: 12
OUTSOLE: SEMIRIGID
Soft leather + flexpell



NEW

DARWIN VELCRO LEATHER CLAY BROWN SR320445

SIZE RANGE: 39-46 / WIDTH: 12
OUTSOLE: SEMIRIGID
Soft leather + flexpell



365

DARWIN DCS VELCRO NAVY BLU SR320448

SIZE RANGE: 39-47 / WIDTH: 14
OUTSOLE: RIGID
Suede + supersoft nylon



NEW

DARWIN LACE LEATHER BLACK SR320446

SIZE RANGE: 39-46 / WIDTH: 12
OUTSOLE: SEMIRIGID
Soft leather + flexpell



NEW

DARWIN LACE LEATHER CLAY BROWN SR320447

SIZE RANGE: 39-46 / WIDTH: 12
OUTSOLE: SEMIRIGID
Soft leather + flexpell



NEW

DARWIN DCS ZIP DARK BROWN SD320539

SIZE RANGE: 39-47 / WIDTH: 14
OUTSOLE: RIGID
Leather + nabuck + flexpell



DEAMBULO LINE



Features

Classic, elegant and lightweight line, a best seller in stores, appreciated for its extreme comfort.

The sole is biomechanical to reduce joint stress and rebalance peak pressure.

Width
12

Biomechanical outsole
FLEXIBLE



The 12-gauge fit makes them particularly suitable for feet that also require custom-made insoles of considerable thickness.

Flexpell® has a sandwich structure with an outer layer that is waterproof, a self-molding open-cell middle layer that ensures microcirculation of air, and an inner layer made of Lycra dermocompatible.

All models are self-molding and the linings are made with seamless technology to contain slight deformities and snug fingers.

OUTSOLE FOCUS

- Flexible timing rocker® / non-slip pads
- Polyurethane tread with high resistance to abrasion



CLASSIC / DEAMBULO



365

DEAMBULO L LEATHER BLACK SA201

SIZE RANGE: 39-47 / WIDTH: 12
OUTSOLE: Flexible
Faux leather + leather



NEW

DEAMBULO L LEATHER DARK BROWN SA202

SIZE RANGE: 39-47 / WIDTH: 12
OUTSOLE: Flexible
Faux leather + leather

ACTIVITY LINE



Features

For a decade, Podartis has been promoting movement and adapted physical activity. Clinical studies have shown that the shoes Activity significantly improve the parameters of gait and posture.

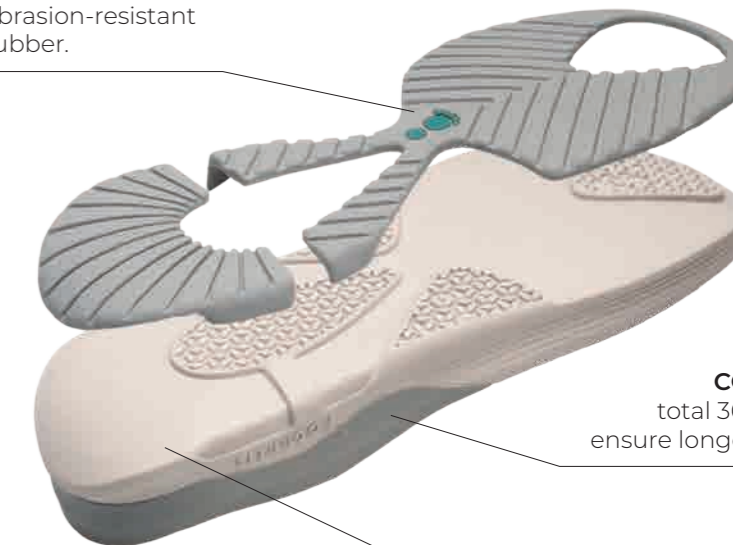
Key features: Seamless upper, stabilizing and extended spurs, various fits, semi-rigid biomechanical outsole.

Width
12-13

Biomechanical outsole
SEMIRIGID



OUTSOLE
made of highly
abrasion-resistant
rubber.



COVER
total 360° to
ensure longer life.

MIDSOLE
high density EVA.

- Seamless upper
- Stabilising and extended backcounters
- Different widths



ACTIVITY / **ACTIVITY**



NEW

HERO EVO LEATHER BLACK PA30067

SIZE RANGE: 39-47 / WIDTH: 12
OUTSOLE: SEMIRIGID
Soft leather + stretch + nylon



365

ONE EVO VELCRO BLACK PA30501

SIZE RANGE: 39-47 / WIDTH: 12
OUTSOLE: SEMIRIGID
Mesh + tecnofilm



NEW

ACTIVITY DCSSPORT MILITARY GREEN PA37783

SIZE RANGE: 35-41 / WIDTH: 13
OUTSOLE: SEMIRIGID
Soft leather + nylon

ACTIVITY / **ACTIVITY**



NEW

NEXT EVO ONE ARMY GREEN PA20386

SIZE RANGE: 39-47 / WIDTH: 12
OUTSOLE: SEMIRIGID
Mesh + tecnofilm



365

NEXT EVO DARK BLACK PA20381

SIZE RANGE: 35-47 / WIDTH: 12
OUTSOLE: SEMIRIGID
Mesh + tecnofilm



NEW

HERO EVO MILITARY GREEN PA30069

SIZE RANGE: 39-47 / WIDTH: 12
OUTSOLE: SEMIRIGID
Faux leather + stretch + nylon



NEW

FREEDOM EVO WR DARK NAVY PA34506

SIZE RANGE: 36-47 unisex / WIDTH: 12
OUTSOLE: SEMIRIGID
WR suede + rubberised leather + flexpell



CARRY OVER FW22

FREEDOM EVO WR BLACK PA34509

SIZE RANGE: 36-47 unisex / WIDTH: 12
OUTSOLE: SEMIRIGID
WR suede + rubberised leather + flexpell



NEW

FREEDOM EVO MID WR ZIP BLACK PA34507

SIZE RANGE: 39-47 / WIDTH: 12
OUTSOLE: SEMIRIGID
WR suede + rubberised leather + flexpell



NEW

ZEPHYR BLACK PA20387

SIZE RANGE: 35-47 unisex / WIDTH: 12
OUTSOLE: SEMIRIGID
Mesh + tecnofilm





WOMEN'S COLLECTION - FALL / WINTER 2023-2024



**JANET NILE
BLACK**
SR102384
SIZE RANGE: 35-42



**JANET STARS
DARK GREEN**
SR102385
SIZE RANGE: 35-42



**JANET STARS
CARAMEL GOLD**
SR102386
SIZE RANGE: 35-42



**JANET STARS
BORDEAUX**
SR102387
SIZE RANGE: 35-42



**JANET STARS
GUNMETAL**
SR102388
SIZE RANGE: 35-42



**JANET STARS
PETROL BLUE**
SR102389
SIZE RANGE: 35-42



**PATRIZIA NIPPON
BRONZE**
SR103829
SIZE RANGE: 35-42



**PATRIZIA NIPPON
DARK STEEL**
SR103833
SIZE RANGE: 35-42



**PATRIZIA HAIR
MOHOGANY**
SR103827
SIZE RANGE: 35-42



**PATRIZIA HAIR
BLACK**
SR103828
SIZE RANGE: 35-42



**PATRIZIA HAIR
GREEN GREY**
SR103826
SIZE RANGE: 35-42



**ARIANNA LEAVES
BRONZE**
SR109557
SIZE RANGE: 35-42



**ARIANNA LEAVES
BLACK**
SR109558
SIZE RANGE: 35-42



**ARIANNA WOOL EVO
SMOKE GREY**
SR109559
SIZE RANGE: 35-42



**ARIANNA WOOL EVO
BLUE**
SR109553
SIZE RANGE: 35-42



**ARIANNA WOOL EVO
PLUM**
SR109561
SIZE RANGE: 35-42



**ARIANNA SPARKS
DARK BLUE**
SR109542
SIZE RANGE: 35-42



**ARIANNA SPARKS
DARK GREY**
SR109543
SIZE RANGE: 35-42



**ARIANNA SPARKS
BORDEAUX**
SR109546
SIZE RANGE: 35-42



**ALIPES VELVET EXOTIC
DARK BEIGE**
SR10195
SIZE RANGE: 35-42



**ALIPES VELVET EXOTIC
GREY**
SR10196
SIZE RANGE: 35-42



**ALIPES VELVET EXOTIC
DARK ROSE**
SR10201
SIZE RANGE: 35-42



**ALIPES VELVET ROYAL
NIGHT BLUE**
SR10202
SIZE RANGE: 35-42



**ALIPES VELVET ROYAL
GREY**
SR10203
SIZE RANGE: 35-42



**ALIPES VELVET ROYAL
PAPRIKA**
SR10204
SIZE RANGE: 35-42



**ALIPES GALAXY
SILVER PETROL**
SR10189
SIZE RANGE: 35-42



**ALIPES GALAXY
BRONZE BROWN**
SR10191
SIZE RANGE: 35-42



**ALIPAD FLUX
DARK BLUE**
SR10192
SIZE RANGE: 35-42



**ALIPAD FLUX
DARK GREEN**
SR10193
SIZE RANGE: 35-42



**ALIPAD FLUX
DARK SILVER**
SR10194
SIZE RANGE: 35-42



**SUSAN NILE
BORDEAUX**
SR103834
SIZE RANGE: 35-42



**SUSAN NILE
BLACK**
SR103837
SIZE RANGE: 35-42



**SUSAN GREASE
DARK GREEN**
SR103839
SIZE RANGE: 35-42

WOMEN'S COLLECTION - FALL / WINTER 2023-2024

SANDY AIR
WIDTH: 10,5



**PATRIZIA AIR II
WHITE**
SR103913
SIZE RANGE: 35-42



**PATRIZIA AIR II
GREEN**
SR103914
SIZE RANGE: 35-42



**PATRIZIA AIR
DARK BLUE**
SR103910
SIZE RANGE: 35-42

ASOLO
WIDTH: 11



**ROMINA WINTER
WOVEN GREEN**
SR631498
SIZE RANGE: 34-42



**ROMINA WINTER
WOVEN DARK BLUE**
SR631496
SIZE RANGE: 34-42



**CIPRO WOOL
DARK GREEN**
SR115493
SIZE RANGE: 34-42



**CIPRO WOOL
RUBY RED**
SR115494
SIZE RANGE: 34-42

CLASSIC
WIDTH: 10,5-11,5



**STEPHANIE II HAIR
BLACK**
SR21836
SIZE RANGE: 35-42



**STEPHANIE II UNIVERSE
DARK BLUE**
SR21837
SIZE RANGE: 35-42



**STEPHANIE II LUX
DARK BROWN**
SR21838
SIZE RANGE: 35-42



**LISA II
BLACK**
SR218234
SIZE RANGE: 35-42



**LISA II
DARK GREY**
SR218235
SIZE RANGE: 35-42



**ATLANTA
BLACK**
SR203622
SIZE RANGE: 35-41



**ATLANTA
DARK GREY**
SR203623
SIZE RANGE: 35-41



**ANNA SHINE
BLACK**
SR208225
SIZE RANGE: 35-41



**ANNA PHYTON
DARK BROWN**
SR208226
SIZE RANGE: 35-41



**STELLA PATENT
BLACK**
SR201525
SIZE RANGE: 35-42



**SOPHIE PATENT
BLACK**
SR201543
SIZE RANGE: 35-42



**ALYSSA II
BLACK**
SR200447
SIZE RANGE: 35-42



**ALYNA
BLACK**
SR200448
SIZE RANGE: 35-42

WOMEN'S COLLECTION - FALL / WINTER 2023-2024

SNEAKERS
WIDTH: 10-11-12



MADISON ZIP FLEUR
BORDEAUX
SR72507
SIZE RANGE: 36-41



MADISON ZIP GLAM
BLACK
SR72508
SIZE RANGE: 36-41



BEVERLY ZIP
BLACK
SR72509
SIZE RANGE: 36-41



BRITTANY ZIP
BLACK
SR72502
SIZE RANGE: 36-41



SHELLY VELCRO
LEATHER DARK GREY
SR713476
SIZE RANGE: 35-41



ADELLE LACCIO
BLACK
SR713591
SIZE RANGE: 35-41



SHELLY VELCRO
LEATHER BLACK
SR713490
SIZE RANGE: 35-41



SHELLY VELCRO
BORDEAUX
SR713491
SIZE RANGE: 35-41



ADELLE VELCRO
GRIGIO EVO
SR713119
SIZE RANGE: 35-41



SHELLY LACE LEATHER
BLACK
SR713492
SIZE RANGE: 35-41



SHELLY LACE
BORDEAUX
SR713493
SIZE RANGE: 35-41



SHELLY LACE LEATHER
DARK GREY
SR713473
SIZE RANGE: 35-41



VIA LEATHER
DARK BLUE
SA24474
SIZE RANGE: 35-41



VIA LEATHER
DARK GREY
SA24475
SIZE RANGE: 35-41



VIA LEATHER
BLACK
SA24476
SIZE RANGE: 35-41



GINGER VELCRO
BLACK
PA20163
SIZE RANGE: 35-41



GINGER VELCRO
GREY
PA20164
SIZE RANGE: 35-41



GINGER LACE
BLACK
PA20165
SIZE RANGE: 35-41



GINGER LACE
GREY
PA20166
SIZE RANGE: 35-41



FANCY EVO GALAXY
LACE BLUE
PA20155
SIZE RANGE: 35-42



FANCY EVO GALAXY
VELCRO BLUE
PA20156
SIZE RANGE: 35-42



FANCY EVO
BLACK
PA20151
SIZE RANGE: 35-42



ZEPHYR W
MULTI BLACK
PA20388
SIZE RANGE: 35-42



ZEPHYR W
DARK SILVER
PA20389
SIZE RANGE: 35-42



ZEPHYR
BLACK
PA20387
SIZE RANGE: 35-47



FREEDOM EVO WR
DARK NAVY
PA34506
SIZE RANGE: 35-47



FREEDOM EVO WR
BLACK
PA34509
SIZE RANGE: 35-47

MEN'S COLLECTION - FALL / WINTER 2023-2024

CLASSIC
WIDTH: 11-11,5-12-14



MICHELANGELO
BLACK
SR104011
SIZE RANGE: 40-46



LEONARDO
BLACK
SR30281
SIZE RANGE: 40-46



BOTERO 11
CLAY BROWN
SR370235
SIZE RANGE: 39-47



BOTERO 11
BLACK
SD370291
SIZE RANGE: 39-47



DARWIN VELCRO
LEATHER BLACK
SR320444
SIZE RANGE: 39-46



DARWIN VELCRO
LEATHER CLAY BROWN
SR320445
SIZE RANGE: 39-46



DARWIN DCS VELCRO
NAVY BLUE
SR320448
SIZE RANGE: 39-47



DARWIN LACE LEATHER
BLACK
SR320446
SIZE RANGE: 39-46



DARWIN LACE LEATHER
CLAY BROWN
SR320447
SIZE RANGE: 39-46



DARWIN DCS ZIP
DARK BROWN
SR320539
SIZE RANGE: 39-47



DEAMBULO L LEATHER
BLACK
SA201
SIZE RANGE: 39-47



DEAMBULO L LEATHER
DARK BROWN
SA202
SIZE RANGE: 39-47

DEAMBULO
WIDTH: 11,5 - 12



HERO EVO
LEATHER BLACK
PA30067
SIZE RANGE: 39-47



ONE EVO
VELCRO BLACK
PA30501
SIZE RANGE: 39-47



ACTIVITY DCS SPORT
MILITARY GREEN
PA37783
SIZE RANGE: 39-47



HERO EVO
MILITARY GREEN
PA30069
SIZE RANGE: 39-47



FREEDOM EVO WR
DARK NAVY
PA34506
SIZE RANGE: 36-47



FREEDOM EVO WR
BLACK
PA34509
SIZE RANGE: 36-47



NEXT EVO ONE
ARMY GREEN
PA20386
SIZE RANGE: 39-47

ACTIVITY
WIDTH: 11 - 12-13



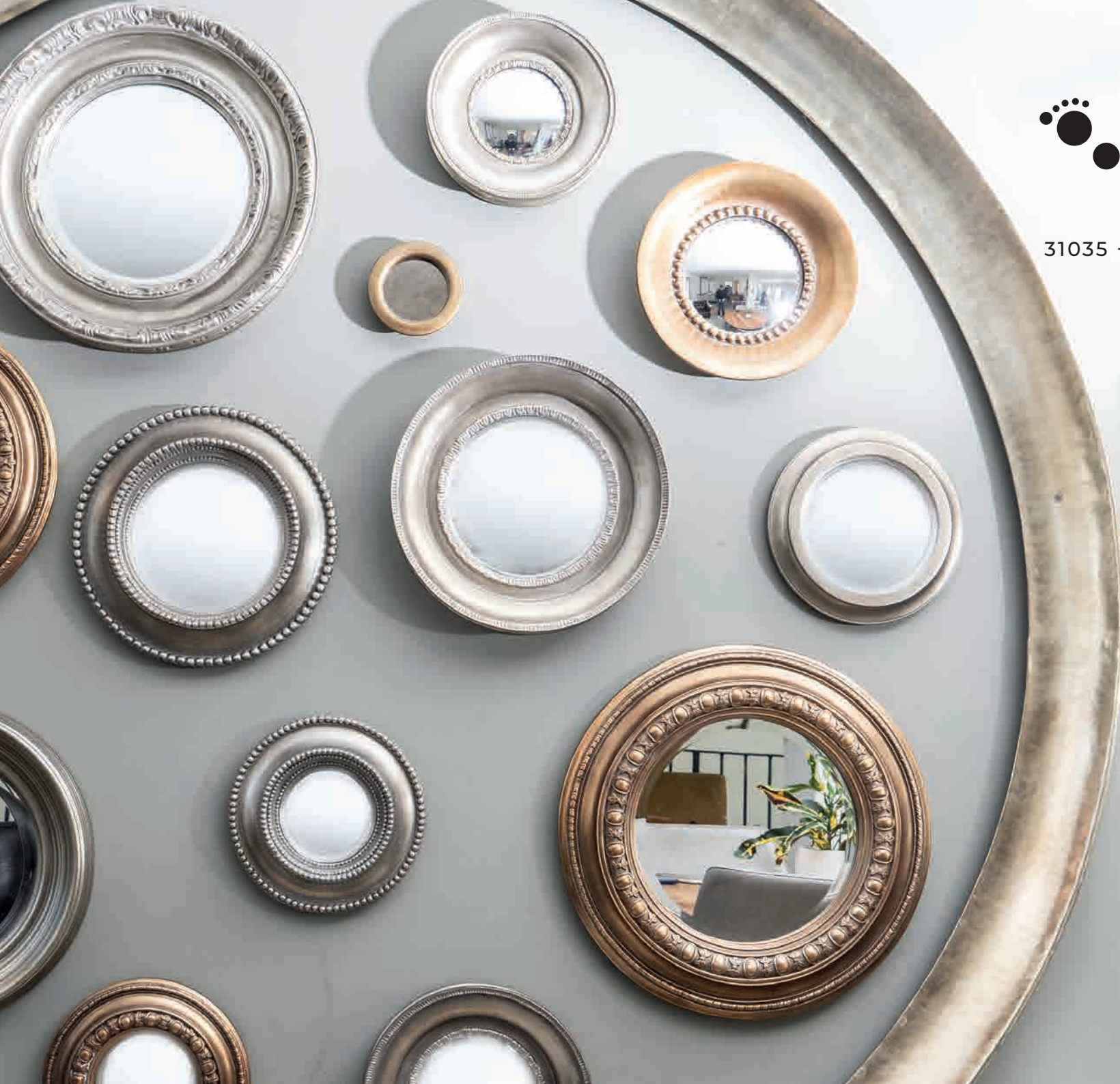
FREEDOM EVO MID WR
ZIP BLACK
PA34507
SIZE RANGE: 35-41



NEXT EVO
DARK BLACK
PA20381
SIZE RANGE: 35-47



ZEPHYR
BLACK
PA20387
SIZE RANGE: 35-47



 **PODARTIS**
clinically tested footwear

VIA ERIZZO 123/C
31035 - CROCETTA DEL MONTELLO
TREVISO - ITALY
TEL. +39 0423 293111
FAX. 0423 622062

SALES@PODARTIS.COM
WWW.PODARTIS.COM

