

 **PODARTIS**
clinically tested footwear



collection book
2024
SPRING / SUMMER

Podartis specializes in the production of footwear, insoles, stockings, braces and materials for the prevention and treatment of the main walking pathologies such as hallux valgus, hammer toes, rheumatic foot, diabetic foot and post foot surgery.

The company's flagship product, the result of more than 30 years of research, is its cutting-edge solutions for the diabetic foot.

Every product made by the company is rigorously clinically tested to meet the highest quality standards in the sector and guarantee maximum protection and comfort.

Continuous product innovation has its source in a constant commitment to research, linked to medical-scientific comparisons and collaborations with some of the most authoritative international experts.

The patents that characterize Podartis products are direct evidence of the company's mission: to help people walk well to live better.

- 12. WOMEN'S collection
- 64. MAN'S collection





ANTIBACTERIAL GREEN TECH



ANTIBACTERIAL



CLINICALLY TESTED



ECO-FRIENDLY

The new specific footbed for the Asolo line covered in organic nappa leather made from corn.
Technological and bio-sustainable fibres to improve our life on the planet.

PODARTIS VEGAN

More and more customers are demanding vegan footwear, whether for ethical reasons (use of “cruelty free” footwear, i.e., footwear that does not use materials of animal origin), or to obviate allergies to metals, or for simple desire to be in line with the green dynamics now ubiquitous in our society.

Here's full range of Vegan styles (**17 on women's collection + 7 on men's collection**):

- All Deambulo W's and M's styles (**Fly, Via, Deambulo**) - Total of 6 styles.
- All **Activity Next** colourways - Total of 3 styles.
- All Activity **Zephyr Air White, Zephyr W pink, Zephyr W heaven sky, Zephyr M navy, Zephyr lime** - Total of 6 styles.
- All **Activity Saturn** colourways - Total of 4 styles.
- PA20475 **Palladio** col. desert - Total of 1 style.



PODARTIS GOES GREEN

The absolute need for a sustainable and conscious choice in the context of the materials used in the collection is more than ever a duty and a commitment in the face of sudden changes in the climate.

Here are the main steps in the field of sustainability in the collection:

- Most of our material supplier use during their production process, **100% green energy**.
- We use leathers from **LGW GOLD** certified tanneries.

LWG certification is a guarantee mark for companies operating in the leather world, (tanneries). It is a recognition that rewards companies in the sector that manage the environmental impact and sustainable economy from a system perspective.

This environmental audit protocol was developed by leather brands and

manufacturers, with input from NGOs such as WWF and Greenpeace. It is updated regularly to ensure it remains relevant and takes into account the needs and evolution of the sector.

- The covering of the insoles of the Asolo line has also been confirmed this year. All Asolo insoles are covered with a biocompatible nappa leather called “antibacterial green tech”. This antibacterial microfiber is in fact made using a combination of derivatives of corn processing, with an impact of reducing emissions by 60% in the production phase. This material also has high characteristics of breathability, it is odorless, washable and completely recyclable.

- All 4 Fancy styles on this collection (2 leather ivory colourways + 2 bluette colourways) have upper mesh (on vamp and quarters) made with recycled polyester certified GLOBAL RECICLE STANDARD (GRS).

The logo consists of a stylized white 'G' with a leaf-like shape inside, positioned above the text "PODARTIS" in a large, white, serif font, and "GREEN" in a smaller, white, sans-serif font below it. The entire logo is set against a background of a grey concrete floor with several green leaves scattered around, some of which form a footprint shape.

COLOUR CONCEPTS SS2024 COLLECTION

This season's colours reflect the rapid changes taking place in society and technology.

Faced with the rapid climate change underway, and with the economic and political crises, consumers they will balance their choices in an optimistic key following two fundamental trends:

- The search for energetic and innovative colours (to look to the future with sunny positivity).

(saturated colour range: **azure, light red, fondant pink, cyber lime, honey gold**)

- The rise of midtones and pastel neutrals that reflect the need for calm and balance.

(pastel colour range: **mint green, pastel pink, heaven sky, beige, ivory**).

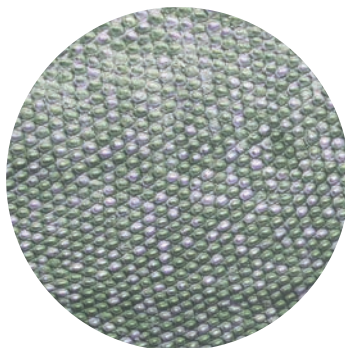


STYLE THEMES - Modula line



KYOTO

A fashion theme with fresh elegance that draws inspiration from the bamboo forests of the famous Japanese resort. Irregular laminated streaks develop on the leather like dense reeds that gently allow beams of shadow and light to shine through. The colours offered are **carbon gray** (Iron) and **silver**.



KOMODO

The most opulent style in the line. A particularly sophisticated and striking animalier theme that features the skin of the world's largest existing reptile. The result is a two-tone reptile motif with distinct sophistication and originality expressed in the two colours: **light gold** and **dark blue**. For discerning consumers who love reptile skins.



PERLE'

The more traditional theme of the Modula line also present in the Well Walk line: A hammered leather with a delicate pearl effect for a classic summer look suitable for all consumers. The proposed colours, very sunny and full of light, are **platinum** and **silver**.

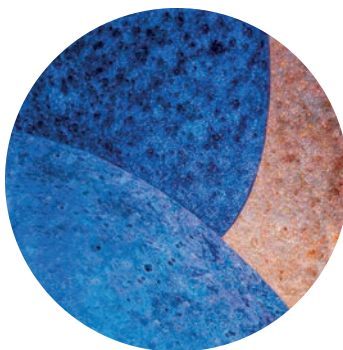


STYLE THEMES - Sandy line



TAHITI

One of the main themes of summer 2024. The suggestion of reflections in the crystal-clear waters of the tropical seas of Polynesia finds rich expression here in a made-in-Italy patent leather with an extraordinary visual effect. Three colours are proposed: **mint green** (inspired by the tones of tropical waters), **silver** and **taupe**. A fashion theme for the most style-conscious consumers.



DESERT

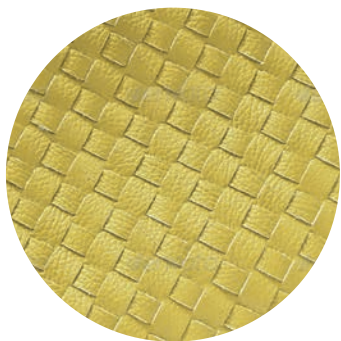
What would happen if laminated leathers were exposed to the prohibitive conditions of the desert? Here take shape in this theme an oxidation and solarization effect that borrows the strength of very intense colours while making them more delicate and intriguing at the same time. The proposed colours are three key tones of summer 2024: **azure**, **honey gold** and **light red**. A look with a strong impact for female consumers who love brighter tones.



EPOQUE

A delicate victorian floral motif in bas-relief enhanced by a delicate shimmering effect gives this theme a gracefully romantic flavor. The proposed colours are three shades from the SS24 summer pastel range: **pastel pink**, **mint green** and **dark blue**. For the more traditional consumers and lovers of delicate colours.





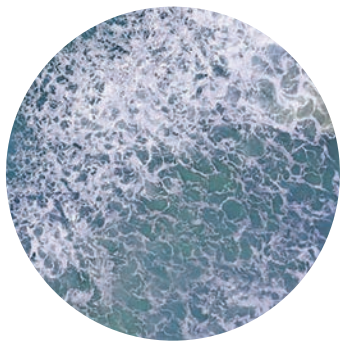
LEATHER

Soft tassels with a woven pattern distinguish this group with a distinctly casual vocation. A “leather” look suitable for all uses designed for consumers looking for a durable quality model. We offer 4 classic summer colours: **white, red, denim blue** and **lime**.



ODYSSEY

A bas-relief pattern on suede uppers evokes the representation of waves typical of ancient Greek art. The result is a pleasant casual look declined in three classic summer colours: **denim blue, red, beige**. An easy-to-impact theme for all consumers and all uses.



OCEAN

A tone-on-tone print on chamois repurposes the classic curvilinear geometries of sea waves fading on the shoreline. A basic look suitable for more conventional consumers, offered in two “timeless” colours: **beige** and **navy blue**.



STYLE THEMES - Asolo line



YACHTING

A fresh and dynamic “woven” look inspired by the classic iconic colours of “sailer” clothing (**blue&white** stripes, **red&white**). Proposed in the three colours red, blue and ice. For customers who love casual sportswear looks with a strong impact.



SABLE'

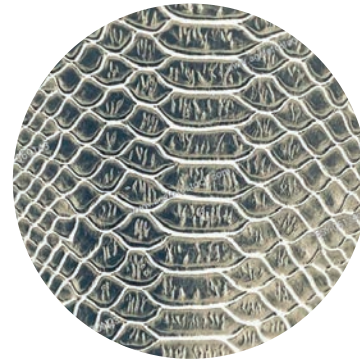
A “sandblasted” effect in which metallic clouds enliven the chamois colour bases, creating a valuable and refined look. Theme offered in the two fashion colours: **red** and **mint green**, with leather-covered wedges. For customers who love the most trendy colours.





CRAFT

A fashion look inspired by the weaves of palm or banana leaves typical of tropical countries gives rise to leathers with a three-dimensional effect enriched by satin-finished metallic foils. Theme proposed in two colours: **navy** and **light gold**. For customers who love sumptuous looks suitable for all activities outside the home.



CHARME

A python print with metallic effect gives the chamois a sophisticated and elegant look.

Satin leather lining of the wedges completes the theme's attitude for all out-of-home activities. For customers who love animal prints.



WOMEN'S COLLECTION

SPRING
SUMMER
2024





WOMEN'S COLLECTION

SPRING / SUMMER
2024

- 14. MODULA line
- 18. SANDY line
- 30. SANDY AIR line
- 32. ASOLO line
- 41. WELL WALK line
- 44. SUPER LIGHT line
- 46. SNEAKERS CITY line
- 52. ACTIVITY line
- 60. DEAMBULO line

MODULA LINE



Features

The Modula line has always been one of the market's benchmarks for elegance and technicality.

Podartis **Seamless Technology** reduces the presence of seams on the inside of the product to reduce painful chafing and ensure maximum protection.

Width
10

Biomechanical outsole
FLEXIBLE



The biomechanical outsole protects the joints during the steps and ensures an even redistribution of pressure.

The Modula footbed is made of an EVA+PU compound that guarantees continuous cushioning of the step and effective protection over time. Moreover, it is well housed inside the sole hull thanks to the Velcro system that guarantees a high product quality.

The M width, combined with the products' self-modelling properties, make it ideal for rheumatic patients who are sensitive to the refined aesthetic taste of Modula products.



OUTSOLE FOCUS

- Biomechanical rocker / protects the joints
- 20 Mm heel / correct posture



SEAMLESS TECHNOLOGY

Fewer seams. Less pain.

FLEXPELL®

Self-moldable upper.

STYLE

Elegant lined wedge.

MODULA / POSITANO



NEW

POSITANO KOMODO DARK BLUE SR685001

SIZE RANGE: 35-41 / WIDTH: 10
OUTSOLE: Flexible
3D printed leather + nappa leather + stretch silk

MODULA / CAPRI



NEW

CAPRI DARK IRON SR685101

SIZE RANGE: 35-41 / WIDTH: 10
OUTSOLE: Flexible
3D printed leather + nappa leather + stretch silk

MODULA / EGADI



NEW

EGADI KYOTO BLACK SR685201

SIZE RANGE: 35-41 / WIDTH: 10
OUTSOLE: Flexible
3D printed leather + satin leather + stretch silk



NEW

POSITANO KOMODO LIGHT GOLD SR685005

SIZE RANGE: 35-41 / WIDTH: 10
OUTSOLE: Flexible
3D printed leather + satin leather + stretch silk



NEW

CAPRI KYOTO SILVER SR685108

SIZE RANGE: 35-41 / WIDTH: 10
OUTSOLE: Flexible
3D printed leather + satin leather + stretch silk



NEW

EGADI PERLE' WHITE SR685204

SIZE RANGE: 35-41 / WIDTH: 10
OUTSOLE: Flexible
Satin leather + rasoflex

MODULA / VENICE



NEW

VENICE KOMODO DARK BLUE SR685301

SIZE RANGE: 35-41 / WIDTH: 10
OUTSOLE: Flexible
3D printed leather + nappa leather + rasoflex



NEW

VENICE KOMODO PERLE' GOLD SR685304

SIZE RANGE: 35-41 / WIDTH: 10
OUTSOLE: Flexible
Satin tumbled leather + nappa satin + rasoflex



NEW

VENICE KYOTO SILVER SR685308

SIZE RANGE: 35-41 / WIDTH: 10
OUTSOLE: Flexible
3D printed leather + satin leather + stretch silk



SANDY LINE



Features

The Sandy line focuses on maximum functionality, adapting to each patient's foot.

Podartis **Seamless Technology** reduces the presence of visible seams on the inside of the product to avoid painful chafing and ensure maximum protection. All liners feature high-density materials for improved comfort and have Dermocompatible Lycra® in the foot contact layer.

Width
10,5

Biomechanical outsole
FLEXIBLE



The new Sandy Biomechanical outsole provides greater protection for the foot's joints during gait phases and guarantees a highperformance redistribution of pressure. The physiological 20mm heel ensures correct patient posture.

The high-density Eva + PU compound of the Sandy footbed ensures continuous cushioning of the step and effective protection especially for rheumatic patients. Dermocompatible microfibre cover.

The 10.5 width, combined with the self-modelling of the products, guarantees an excellent fit even for the most demanding feet.

SEAMLESS TECHNOLOGY

Fewer seams. Less pain.

FLEXPELL®

Self-moldable upper.



OUTSOLE FOCUS

- Biomechanical rocker / joints protection
- 20 Mm heel / correct posture





NEW

ALIPES EPOQUE DARK BLU SR101630

SIZE RANGE: 35-42 / WIDTH: 10,5
OUTSOLE: Flexible
Embossed satin suede + rasoflex



NEW

ALIPES EPOQUE MINT GREEN SR101637

SIZE RANGE: 35-42 / WIDTH: 10,5
OUTSOLE: Flexible
Embossed satin suede + rasoflex



NEW

ALIPES EPOQUE PASTEL PINK SR101639

SIZE RANGE: 35-42 / WIDTH: 10,5
OUTSOLE: Flexible
Embossed satin suede + rasoflex



NEW

ALIPES ODISSEY DENIM BLU SR102030

SIZE RANGE: 35-42 / WIDTH: 10,5
OUTSOLE: Flexible
Embossed satin suede + stretch silk



NEW

ALIPES ODISSEY BEIGE SR102035

SIZE RANGE: 35-42 / WIDTH: 10,5
OUTSOLE: Flexible
Embossed satin suede + stretch silk



NEW

ALIPES ODISSEY RED SR102039

SIZE RANGE: 35-42 / WIDTH: 10,5
OUTSOLE: Flexible
Embossed satin suede + stretch silk





SANDY / ALISUN



NEW

ALISUN TAHITI BRONZE SR102105

SIZE RANGE: 35-42 / WIDTH: 10,5
OUTSOLE: Flexible
Patent leather



NEW

ALISUN TAHITI MINT GREEN SR102107

SIZE RANGE: 35-42 / WIDTH: 10,5
OUTSOLE: Flexible
Patent leather



NEW

ALISUN TAHITI SILVER SR102108

SIZE RANGE: 35-42 / WIDTH: 10,5
OUTSOLE: Flexible
Patent leather



NEW

ALISUN DESERT AZURE SR102270

SIZE RANGE: 35-42 / WIDTH: 10,5
OUTSOLE: Flexible
Satin leather



NEW

ALISUN DESERT HONEY GOLD SR102275

SIZE RANGE: 35-42 / WIDTH: 10,5
OUTSOLE: Flexible
Satin leather



NEW

ALISUN DESERT LIGHT RED SR102279

SIZE RANGE: 35-42 / WIDTH: 10,5
OUTSOLE: Flexible
Satin leather + rasoflex



SANDY / MELODY



NEW

MELODY LEATHER JEANS SR116610

SIZE RANGE: 35-42 / WIDTH 10,5
OUTSOLE: Flexible
Soft calf leather



NEW

MELODY LEATHER WHITE SR116614

SIZE RANGE: 35-42 / WIDTH: 10,5
OUTSOLE: Flexible
Soft calf leather



NEW

MELODY LEATHER LIME SR116617

SIZE RANGE: 35-42 / WIDTH: 10,5
OUTSOLE: Flexible
Soft calf leather

SANDY / SUSAN



NEW

MELODY LEATHER RED SR116619

SIZE RANGE: 35-42 / WIDTH: 10,5
OUTSOLE: Flexible
Soft calf leather



NEW

SUSAN LEATHER DENIM BLUE SR106300

SIZE RANGE: 35-42 / WIDTH: 10,5
OUTSOLE: Flexible
Soft calf leather



NEW

SUSAN BAROQUE PASTEL PINK SR106339

SIZE RANGE: 35-42 / WIDTH: 10,5
OUTSOLE: Flexible
Embossed satin suede + rasoflex

SANDY / KELLY



NEW

KELLY TAHITI SILVER SR117108

SIZE RANGE: 35-42 / WIDTH: 10,5
OUTSOLE: Flexible
Patent leather



NEW

KELLY LEATHER RED SR117109

SIZE RANGE: 35-42 / WIDTH: 10,5
OUTSOLE: Flexible
Soft calf leather



NEW

KELLY OCEAN NAVY BLU SR117130

SIZE RANGE: 35-42 / WIDTH: 10,5
OUTSOLE: Flexible
Printed suede

SANDY / MAYA



NEW

KELLY ODISSEY BEIGE SR117135

SIZE RANGE: 35-42 / WIDTH: 10,5
OUTSOLE: Flexible
Embossed suede



NEW

MAYA OCEAN BEIGE SR101935

SIZE RANGE: 35-42 / WIDTH: 10,5
OUTSOLE: Flexible
Printed suede



NEW

MAYA PLAYA MULTICOLOUR SR101937

SIZE RANGE: 35-42 / WIDTH: 10,5
OUTSOLE: Flexible
Multicolour printed leather



SANDY / ZEA



NEW

ZEA LEATHER NAVY BLU SR105100

SIZE RANGE: 35-42 / WIDTH 10,5
OUTSOLE: Flexible
Soft calf leather + rasoflex



NEW

ZEA LEATHER WHITE SR105104

SIZE RANGE: 35-42 / WIDTH 10,5
OUTSOLE: Flexible
Soft calf leather + rasoflex



NEW

ZEA OCEAN BEIGE SR105135

SIZE RANGE: 35-42 / WIDTH: 10,5
OUTSOLE: Flexible
Printed suede + rasoflex

SANDY / VALERY



NEW

ZEA PLAYA MULTICOLOUR SR105137

SIZE RANGE: 35-42 / WIDTH: 10,5
OUTSOLE: Flexible
Multicolour printed leather + rasoflex



365

VALERY SHINING BLU SR114850

SIZE RANGE: 35-42 / WIDTH 10,5
OUTSOLE: Flexible
Suede leather + Flexpell®

SANDY / ANGEL



NEW

ANGEL TAHITI BRONZE SR116505

SIZE RANGE: 35-42 / WIDTH: 10,5
OUTSOLE: Flexible
Patent leather + satin leather



NEW

ANGEL EPOQUE DARK BLUE SR116630

SIZE RANGE: 35-42 / WIDTH: 10,5
OUTSOLE: Flexible
Embossed satin suede + nappa leather



NEW

ANGEL EPOQUE MINT GREEN SR116637

SIZE RANGE: 35-42 / WIDTH: 10,5
OUTSOLE: Flexible
Embossed satin suede + satin leather

SANDY / AIDA



NEW

AIDA TAHITI SILVER SR102208

SIZE RANGE: 35-42 / WIDTH: 10,5
OUTSOLE: Flexible
Patent leather + satin leather + stretch silk



NEW

AIDA ODISSEY BEIGE SR102235

SIZE RANGE: 35-42 / WIDTH: 10,5
OUTSOLE: Flexible
Embossed suede + satin leather + rasoflex

LINEA SANDY AIR



Features

New line dedicated to people who work all day on their feet (restaurants, dental surgeries, retail shops) and need a restful **benefit to reduce the feeling of tired legs.**

Width
10,5

Biomechanical outsole
FLEXIBLE



The new Sandy Biomechanical outsole provides greater protection for the foot's joints during gait phases and guarantees a highperformance redistribution of pressure.

The physiological 20mm heel ensures correct patient posture.

The high-density Eva + Pu compound of the Sandy footbed ensures continuous cushioning of the step and effective protection especially for rheumatic patients. Dermocompatible microfibre cover.

The 10.5 width, combined with the self-modelling of the products, guarantees an excellent fit even for the most demanding feet.

SEAMLESS TECHNOLOGY

Fewer seams. Less pain.

FLEXPELL®

Self-moldable perforated upper.
Maximum breathability.

CLOSURE

"one hand closure system" with velcro strap

SANDY AIR / PATRIZIA



CARRY
OVER
FW23

PATRIZIA AIR II WHITE SR103913

SIZE RANGE: 35-42 / WIDTH: 10,5

OUTSOLE: Flexible

Micro-perforated stretch + satin leather



CARRY
OVER
FW23

PATRIZIA AIR II DARK BLUE SR103910

SIZE RANGE: 35-42 / WIDTH: 10,5

OUTSOLE: Flexible

Micro-perforated stretch + satin leather

ASOLO LINE



Features

The Asolo Line is a technical and stylistic evolution of the Modula Line.

The new biomechanical Asolo sole with large non-slip sole, the refined materials and the XL width make it ideal for the most demanding customers.



Width

11

Biomechanical outsole

SEMIRIGID



The sole is dual density to ensure cushioning and grip while walking. Semi-rigid at 40% to reduce joint stress and facilitate the biomechanics of walking, while the 25 mm heel allows for better posture.

The technical principles of self-moldable and seamless lining make it ideal for the most sensitive feet and for accommodating even major deformities.

The Asolo footbed is made of PU+EVA to ensure effective cushioning and comfort over time.



OUTSOLE FOCUS

- Shock-absorbing areas / high resistance
- 25 Mm heel / better posture





NEW

ROMINA YATCHING BLUE SR632000

SIZE RANGE: 34-42 / WIDTH: 11
OUTSOLE: Semirigid
Woven embossed leather + stretch silk



NEW

ROMINA YATCHING ICE SR632004

SIZE RANGE: 34-42 / WIDTH: 11
OUTSOLE: Semirigid
Woven embossed leather + stretch silk



NEW

ROMINA YATCHING RED SR632009

SIZE RANGE: 34-42 / WIDTH: 11
OUTSOLE: Semirigid
Woven embossed leather + stretch silk



NEW

ROMINA WOVEN SUNFLOWER SR632005

SIZE RANGE: 34-42 / WIDTH: 11
OUTSOLE: Semirigid
Woven embossed leather + stretch silk



NEW

ROMINA WOVEN NAVY SR631007

SIZE RANGE: 34-42 / WIDTH: 11
OUTSOLE: Semirigid
Woven embossed leather + stretch silk

ASOLO / CLOE



NEW

CLOE CHARME NAVY SR632130

SIZE RANGE: 34-42 / WIDTH: 11
OUTSOLE: Semirigid
Phyton satin leather



NEW

CLOE VICTORIAN BLACK SR632131

SIZE RANGE: 34-42 / WIDTH: 11
OUTSOLE: Semirigid
Printed suede



NEW

CLOE DROPS ICE SR632134

SIZE RANGE: 34-42 / WIDTH: 11
OUTSOLE: Semirigid
3D printed leather

ASOLO / CIPRO



NEW

CIPRO CRAFT LIGHT GOLD SR630935

SIZE RANGE: 34-42 / WIDTH: 11
OUTSOLE: Semirigid
Woven embossed leather + satin leather + stretch silk



NEW

MONICA WOVEN SUNFLOWER SR632205

SIZE RANGE: 34-42 / WIDTH: 11
OUTSOLE: Semirigid
Woven embossed leather



NEW

MONICA WOVEN NAVY SR632230

SIZE RANGE: 34-42 / WIDTH: 11
OUTSOLE: Semirigid
Woven embossed leather



NEW

MONICA SABLE' MINT GREEN SR632237

SIZE RANGE: 34-42 / WIDTH: 11
OUTSOLE: Semirigid
Satin leather



NEW

MONICA SABLE' RED SR632239

SIZE RANGE: 34-42 / WIDTH: 11
OUTSOLE: Semirigid
Satin leather





ASOLO / SELENA



NEW

SELENA CRAFT NAVY BLUE SR631730

SIZE RANGE: 34-42 / WIDTH: 11
OUTSOLE: Semirigid
Woven embossed leather

ASOLO / YASMINE



NEW

YASMINE CHARME NAVY BLUE SR631830

SIZE RANGE: 34-42 / WIDTH: 11
OUTSOLE: Semirigid
Phyton satin leather



NEW

YASMINE CHARME SILVER SR631834

SIZE RANGE: 34-42 / WIDTH: 11
OUTSOLE: Semirigid
Phyton satin leather



NEW

SELENA CRAFT LIGHT GOLD SR631735

SIZE RANGE: 34-42 / WIDTH: 11
OUTSOLE: Semirigid
Woven embossed leather



NEW

YASMINE CHARME ROSE SR631839

SIZE RANGE: 34-42 / WIDTH: 11
OUTSOLE: Semirigid
Phyton satin leather



NEW

YASMINE VICTORIAN BLACK SR631831

SIZE RANGE: 34-42 / WIDTH: 11
OUTSOLE: Semirigid
Printed suede





WELLWALK LINE



Features

The Well Walk Podartis line is designed for all people with foot or joint pain, giving stability at every step, **reducing stress on ankles and knees.**

Unique and original, biomechanically and clinically tested in the best Italian and international laboratories and clinics.

NATURAL STEP TIMING



1. Contact

20% of total foot strike time

2. Support

55% of total foot strike time

3. Propulsion

25% of total foot strike time

Width
12-13,5

Biomechanical outsole
SEMIRIGID



The Timing Rocker® Podartis sole in micro workable with 20mm heel is semi-rigid to 70% and reduces the energy demand for the step, ensuring a smooth transition between the moment of contact and propulsion.

Ideal for dynamic people who love to experience the urban context. Also ideal for diabetic or rheumatic patients at risk 2.

Seamless Podartis Technology reduces the presence of visible seams inside of the product to avoid painful chafing and ensure maximum protection.

All inner liners feature high density materials for a better comfort.

The choice of WIDTH 11-12 allows to accommodate even the feet with important deformities.

OUTSOLE FOCUS

- Timing rocker® / 70% semirigid outsole
- Vibram tread / high abrasion resistance



- Harmonious movement for the whole body
- Less stress on the forefoot
- Improves ergonomic functionality
- Promotes joint economy

WELLWALK / CRISTAL



NEW

CRISTAL PERLE' PLATINUM SR609135

SIZE RANGE: 35-41 / WIDTH: 13,5
OUTSOLE: Semirigid
Satin tumbled leather + nappa satin + stretch

WELLWALK / MIYA



NEW

MIYA PERLE' SILVER SR608138

SIZE RANGE: 35-41 / WIDTH: 13,5
OUTSOLE: Semirigid
Satin tumbled leather + nappa satin + stretch

WELLWALK / MERCURY



NEW

MERCURY PERLE' SILVER SR605238

SIZE RANGE: 35-41 / WIDTH: 12
OUTSOLE: Semirigid
Satin tumbled leather + nappa satin + stretch



365

MERCURY BEIGE SR603085

SIZE RANGE: 35-41 / WIDTH: 12
OUTSOLE: Semirigid
Nubuck

SUPER LIGHT LINE



Features

Extremely light sole, with stabilizing insert in composite fiber.

Innovative design combined with the most classic of biomechanical constructions.

Width
12

Biomechanical outsole
SEMIRIGID



The Timing Rocker® Podartis sole in micro workable with 20mm heel is semi-rigid to 70% and reduces the energy demand for the step, ensuring a smooth transition between the moment of contact and propulsion.

Ideal for dynamic people who love to experience the urban context. Also ideal for diabetic or rheumatic patients at risk 2.

Seamless Podartis Technology reduces the presence of visible seams inside of the product to avoid painful chafing and ensure maximum protection. All inner liners feature high density materials for a better comfort.

The choice of WIDTH 11-12 allows to accommodate even the feet with important deformities.

OUTSOLE FOCUS

- Timing rocker / biomechanical outsole with micro
- Support structure / 330 km / m³ density
- Heel / pod50 density 240kg / m³ shore a 50



SUPER LIGHT / MERCURY



NEW

MERCURY EVO CRAFT NAVY BLUE SR605130

SIZE RANGE: 35-41 / WIDTH: 12

OUTSOLE: Semirigid

Woven embossed leather + satin leather + stretch silk



NEW

MERCURY EVO PERLE' PLATINUM SR605138

SIZE RANGE: 35-41 / WIDTH: 12

OUTSOLE: Semirigid

Satin tumbled leather + nappa satin + stretch

SNEAKER CITY LINE

Features

From the need to introduce a “City Chic” style, in line with the trends of the moment, Podartis has developed the Activity City line.

The Sneakers style associated with the Timing Rocker® sole for a physiological and natural step has made it one of the best seller lines of the last seasons.



Width

10

11

Biomechanical outsole

FLEXIBLE



SEMIRIGID



The new SOFTY sole made of made in Italy EVA foam, is a biomechanical outsole with extreme comfort, designed to reduce joint stress and rebalance pressure peaks.

The compound technology is designed to ensure lightness, softness and elasticity but also abrasion and tear resistance, and good grip on dry and wet surfaces.



OUTSOLE FOCUS

- 60% Semirigid / superlight bi-density polyurethane
- 70% Semirigid / microporous eva



SEAMLESS TECHNOLOGY

Fewer seams. Less pain.

CLOSURE

Easy "one-hand" fitting with Zip closure.

SNEAKER CITY / SHARON



NEW

SHARON LEATHER BLUE SR400100

SIZE RANGE: 36-42 / WIDTH: 10
OUTSOLE: Flexible
Satin soft nappa leather



NEW

SHARON LEATHER ICE SR400108

SIZE RANGE: 36-42 / WIDTH: 10
OUTSOLE: Flexible
Satin soft nappa leather



SNEAKER CITY / SIENNA



NEW



SIENNA WHITE DENIM SR400230

SIZE RANGE: 36-42 / WIDTH: 10
OUTSOLE: Flexible
Calf leather + suede + textile stretch



NEW



SIENNA BEIGE YELLOW SR400237

SIZE RANGE: 36-42 / WIDTH: 10
OUTSOLE: Flexible
Calf leather + suede + textile stretch







SNEAKER CITY / TRACY



TRACY ZIP WHITE SR400304

SIZE RANGE: 36-42 / WIDTH: 10
OUTSOLE: Flexible
Calf leather



TRACY ZIP BEIGE SR400305

SIZE RANGE: 36-42 / WIDTH: 10
OUTSOLE: Flexible
Calf leather

SNEAKER CITY / SHELLY



SHELLY VELCRO OYSTER GREY SR713497

SIZE RANGE: 35-41 / WIDTH: 11
OUTSOLE: Semirigid
Satin leather + nylon



SHELLY LACE OYSTER GREY SR713498

SIZE RANGE: 35-41 / WIDTH: 11
OUTSOLE: Semirigid
Satin leather + nylon

ACTIVITY LINE



Features

Podartis has been promoting movement and adapted physical activity for a decade. Clinical studies have shown that **Activity shoes significantly improve gait and posture parameters.**

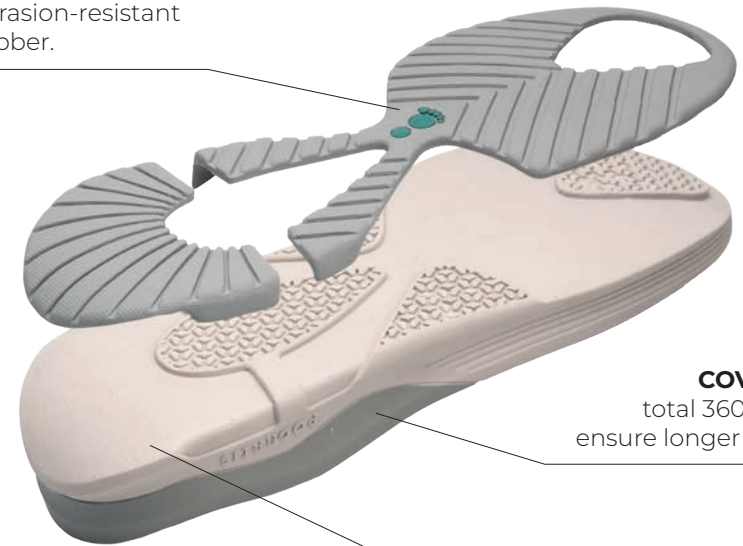
Width
11-12

Biomechanical outsole
SEMIRIGID



OUTSOLE FOCUS

OUTSOLE
made of highly
abrasion-resistant
rubber.



COVER
total 360° to
ensure longer life.

MIDSOLE
high density EVA.

- Seamless upper
- Stabilising and extended backcounters
- Various fits





NEW

GINGER LACE SUMMER GREEN PA201337

SIZE RANGE: 35-42 / WIDTH: 11
OUTSOLE: Semirigid
Suede + stretch airmesh



NEW

GINGER VELCRO HEAVEN SKY PA201430

SIZE RANGE: 35-42 / WIDTH: 11
OUTSOLE: Semirigid
Suede + stretch airmesh



NEW

GINGER VELCRO SUMMER GREEN PA201437

SIZE RANGE: 35-42 / WIDTH: 11
OUTSOLE: Semirigid
Suede + stretch airmesh



ACTIVITY / FANCY



NEW

FANCY EVO VELCRO LEATHER IVORY PA201304

SIZE RANGE: 35-42 / WIDTH: 12
OUTSOLE: Semirigid
Calf leather + satin stretch mesh



NEW

FANCY EVO VELCRO BLUETTE PA201335

SIZE RANGE: 35-42 / WIDTH: 12
OUTSOLE: Semirigid
Calf leather + satin stretch mesh



365

FANCY EVO RED PA20139

SIZE RANGE: 35-42 / WIDTH: 12
OUTSOLE: Semirigid
Suede + air mesh



NEW

FANCY EVO LEATHER IVORY PA201334

SIZE RANGE: 35-42 / WIDTH: 12
OUTSOLE: Semirigid
Calf leather + satin stretch mesh



NEW

FANCY EVO BLUETTE PA201330

SIZE RANGE: 35-42 / WIDTH: 12
OUTSOLE: Semirigid
Calf leather + satin stretch mesh



365

FANCY EVO BLACK PA20151

SIZE RANGE: 35-42 / WIDTH: 12
OUTSOLE: Semirigid
Suede + air mesh

ACTIVITY / ZEPHYR



NEW

ZEPHYR W HEAVEN SKY PA20981

SIZE RANGE: 35-42 / WIDTH: 12
OUTSOLE: Semirigid
Nylon mesh + tecnofilm



NEW

ZEPHYR W PINK PA20982

SIZE RANGE: 35-42 / WIDTH: 12
OUTSOLE: Semirigid
Nylon mesh + tecnofilm



NEW

ZEPHYR W AIR WHITE PA20983

SIZE RANGE: 35-42 / WIDTH: 12
OUTSOLE: Semirigid
Nylon mesh + tecnofilm



NEW

ZEPHYR W LEATHER WHITE PA20985

SIZE RANGE: 35-42 / WIDTH: 12
OUTSOLE: Semirigid
Nylon mesh + tecnofilm



ACTIVITY / NEXT



365

NEXT SILVER PA20378

SIZE RANGE: 35-42 / WIDTH: 12
OUTSOLE: Semirigid
Mesh + tecnofilm

ACTIVITY / PALLADIO



NEW

PALLADIO BEIGE PA20475

SIZE RANGE: 36-48 UNISEX / WIDTH: 12
OUTSOLE: Semirigid
Vegan nubuck + airmesh

ACTIVITY / FREEDOM



365

NEXT EVO DARK BLACK PA20381

SIZE RANGE: 35-47 UNISEX / WIDTH: 12
OUTSOLE: Semirigid
Mesh + tecnofilm



365

FREEDOM WR GREY PA34508

SIZE RANGE: 35-47 UNISEX / WIDTH: 12
OUTSOLE: Semirigid
Water resistant suede + waterproof nylon



ACTIVITY KNITTED / SATURN



NEW

SATURN BEIGE PA381371

SIZE RANGE: 35-42 / WIDTH: 11
OUTSOLE: Semirigid
Knitted textile



NEW

SATURN BLU PA381380

SIZE RANGE: 35-47 UNISEX / WIDTH: 11
OUTSOLE: Semirigid
Knitted textile



NEW

SATURN PLUM PA381377

SIZE RANGE: 35-42 / WIDTH: 11
OUTSOLE: Semirigid
Knitted textile



NEW

SATURN CARBON PA381371

SIZE RANGE: 35-47 UNISEX / WIDTH: 11
OUTSOLE: Semirigid
Knitted textile



DEAMBULO LINE



Features

Classic line, elegant and light, best seller in shops, appreciated for its extreme comfort.

The sole is biomechanical to reduce joint stress and rebalance pressure peaks.

Width
12

Biomechanical outsole
FLEXIBLE



The 12 width makes them particularly suitable for feet that also need custom-made insoles with a significant thickness.

The Flexpell has a sandwich structure with a waterproof outer layer, a self-modelling intermediate layer with open cells that guarantees microcirculation of air and an inner layer in dermocompatible Lycra.

All models are self-modelling and the linings are made with seamless technology to contain slight deformities and grippy fingers.

- Ideal for rheumatic and diabetic patients in risk class 1.



OUTSOLE FOCUS

- Flexible timing rocker® / anti-slip pads
- Tread / high abrasion resistance polyurethane



DEAMBULO / VIA



NEW

VIA LEATHER NAVY BLUE SA24470

SIZE RANGE: 35-41 / WIDTH: 12
OUTSOLE: Flexible
Vegan nappa + stretch textile



NEW

VIA LEATHER LIGHT BEIGE SA24478

SIZE RANGE: 35-41 / WIDTH: 12
OUTSOLE: Flexible
Vegan nappa + stretch textile



NEW

VIA LEATHER ROSE BRONZE SA24479

SIZE RANGE: 35-41 / WIDTH: 12
OUTSOLE: Flexible
Vegan nappa + stretch textile

DEAMBULO / FLY



NEW

FLY ROSE BRONZE SA572

SIZE RANGE: 35-41 / WIDTH: 12
OUTSOLE: Flexible
Vegan nappa + stretch airmesh



NEW

FLY LIGHT SKY SA577

SIZE RANGE: 35-41 / WIDTH: 12
OUTSOLE: Flexible
Vegan nappa + stretch airmesh



MEN'S COLLECTION

SPRING
SUMMER
2024





MEN'S COLLECTION

SPRING / SUMMER
2024

- 66. CLASSIC line
- 70. CASUAL line
- 74. ACTIVITY line
- 78. DEAMBULO line

CLASSIC LINE



Features

The Classic Line for Men has always been one of Podartis' cornerstones to offer an elegant product for the business man combining technicality and functionality of the products.

In particular, iconic products such as Giotto, available in three sizes from stock and Botero, available in five different sizes, are in great demand also in the spring/summer season with colour variants in line with current trends.

Width
11,5
11-12

Biomechanical outsole
SEMIRIGID
FLEXIBLE



The Timing Rocker® Podartis micro-machinable sole is 70% semirigid and reduces the energy demand for stepping, ensuring a smooth transition between the moment of contact and propulsion.

Ideal for Junior - Senior people over 55, with limited joint mobility and progressive bone decalcification. Particularly recommended for diabetic or rheumatic patients in risk grade 2. To increase the performance of effectiveness and protection, it is completed by the use of treads among the best performing in terms of abrasion resistance and cushioning developed in **collaboration with Vibram**.

Podartis **Seamless Technology** reduces the presence of visible seams on the inside of the product to avoid painful chafing and ensure maximum protection. All inner linings feature high-density materials for improved comfort.

The choice of socks allows to accommodate even feet with major deformities, responding fully to all degrees of risk provided by the International **Diabetic and Rheumatic** Triage.

OUTSOLE FOCUS

- Timing rocker / biomechanical outsole with micro
- Support structure / 330 km / m³ density
- Heel / pod50 density 240kg / m³ shore a 50



- Shock-absorbing heel
- Vibram tread
- High abrasion resistance



CARRY
OVER
SS23

BOTERO 11 FORATO SAND SD374062

SIZE RANGE: 39-47 / WIDTH: 11,5
OUTSOLE: Semirigid
Soft nubuck leather + microperforated nubuck



CARRY
OVER
SS23

BOTERO 11 FORATO DARK BLUE SD374063

SIZE RANGE: 39-47 / WIDTH: 11,5
OUTSOLE: Semirigid
Soft nubuck leather + microperforated nubuck



ON
DEMAND

BOTERO 12 FORATO BLACK SR30891

SIZE RANGE: 39-48 / WIDTH: 12
OUTSOLE: Flexible
Soft nubuck leather + microperforated nubuck



CLASSIC / MICHELANGELO



MICHELANGELO BLACK SR104011

SIZE RANGE: 40-46 / WIDTH: 11
OUTSOLE: Flexible
Leather

CLASSIC / RAFFAELLO



RAFFAELLO BROWN SR108122

SIZE RANGE: 40-46 / WIDTH: 11
OUTSOLE: Flexible
Leather

CASUAL LINE



Features

Podartis shoes for diabetes prevention are designed according to international guidelines.

For 30 years we have been researching innovative and technologically advanced solutions to improve the protection that therapeutic footwear must offer to a diabetic patient in risk grade 2 and, even more so, in risk grade 3.

Width
11-12-14

Biomechanical outsole
SEMIRIGID



The Podartis therapeutic shoe is made with **Seamless Technology** that reduces the presence of visible seams inside the product to avoid chafing and ensure maximum protection.

The new **patented DCS Diab sole** is the result of technological innovation: ideal for better control of excess pronation and supination and greater support even in cases of **overWIDTH** (tested up to 140 kg), it consists of a composite fibre support element (DCS), a high-density Eva midsole and a rubber tread with high abrasion resistance and stabilising, anti-collapse lugs.

The lining is made of **dermocompatible Drypod with an abrasion resistance** of over 100,000 cycles.

All products in the Diab line feature the Easy Fitting fastening system with Velcro straps to better stabilise the foot inside the shoe.



OUTSOLE FOCUS

- Composite fibers DCS
- Tested up to 140 kg
- Midsole / superlight EVA
- Rubber tread
- High resistance



- High abrasion resistance
- Stabilisation
- Elastic adjustment

CASUAL / DARWIN



CARRY
OVER
SS23

DARWIN VELCRO ARMY GREEN SR320443

SIZE RANGE: 39-47 / WIDTH: 12
OUTSOLE: Semirigid
Suede + stretch air mesh

CLASSIC / TURNER



NEW

TURNER NAVY BLUE PA381170

SIZE RANGE: 39-47 / WIDTH: 12
OUTSOLE: Semirigid
Calf leather + textile

CLASSIC / TAYLOR



NEW

TAYLOR WHITE PA381274

SIZE RANGE: 39-47 / WIDTH: 11
OUTSOLE: Semirigid
Calf leather



365



DARWIN DCS ZIP BLACK SR320571

SIZE RANGE: 39-46 / WIDTH: 14
OUTSOLE: Semirigid
Soft leather + nylon eco mesh



NEW

TURNER TAUPE PA381175

SIZE RANGE: 39-47 / WIDTH: 12
OUTSOLE: Semirigid
Calf suede + textile



TURNER

TURNER

TURNER

ACTIVITY LINE



Features

For over eight years **Podartis** has been **promoting movement and adapted physical activity**. Clinical studies have shown that Activity shoes significantly improve walking and posture parameters.

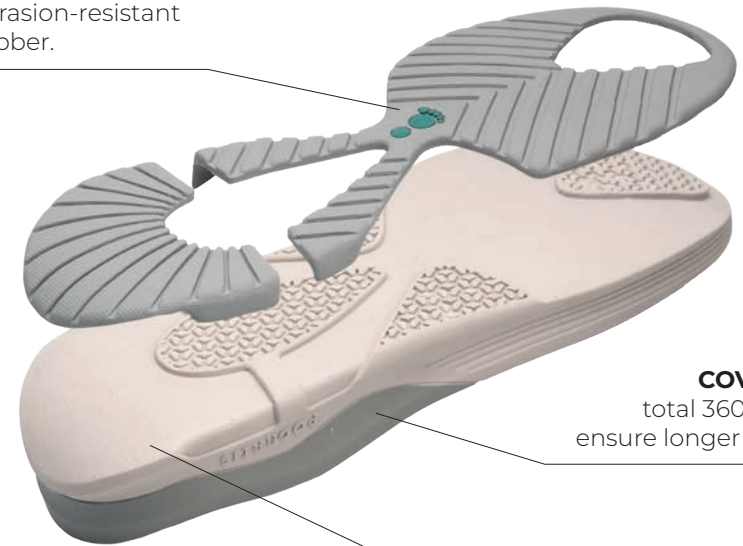
Width
11-12

Biomechanical outsole
SEMIRIGID



OUTSOLE FOCUS

OUTSOLE
made of highly
abrasion-resistant
rubber.



COVER
total 360° to
ensure longer life.

MIDSOLE
high density EVA.



- Seamless upper
- Stabilising and extended backcounters
- Various fits

ACTIVITY / ZEPHYR



NEW

ZEPHYR M NAVY PA20980

SIZE RANGE: 39-47 / WIDTH: 12
OUTSOLE: Semirigid
Nylon mesh + tecnofilm



NEW

ZEPHYR M AIR WHITE PA20984

SIZE RANGE: 39-47 / WIDTH: 12
OUTSOLE: Semirigid
Nylon mesh + tecnofilm



NEW

ZEPHYR M LIME PA20989

SIZE RANGE: 39-47 / WIDTH: 12
OUTSOLE: Semirigid
Nylon mesh + tecnofilm

ACTIVITY / HERO



NEW

HERO EVO CARBON PA300831

SIZE RANGE: 39-47 / WIDTH: 12
OUTSOLE: Semirigid
Suede + stretch airmesh



HERO EVO GREY PA30068

SIZE RANGE: 39-47 / WIDTH: 12
OUTSOLE: Semirigid
Suede + nylon

ACTIVITY / PALLADIO



NEW

PALLADIO BEIGE PA20475

SIZE RANGE: 36-48 UNISEX / WIDTH: 12
OUTSOLE: Semirigid
Vegan nubuck+airmesh

ACTIVITY / FREEDOM



FREEDOM WR GREY PA34508

SIZE RANGE: 35-47 UNISEX / WIDTH: 12
OUTSOLE: Semirigid
Water resistant suede + waterproof nylon

ACTIVITY KNITTED / SATURN



SATURN BLU PA381380

SIZE RANGE: 35-47 UNISEX / WIDTH: 11
OUTSOLE: Semirigid
Knitted textile

ACTIVITY / NEXT EVO



NEXT EVO DARK BLACK PA20381

SIZE RANGE: 35-47 UNISEX / WIDTH: 12
OUTSOLE: Semirigid
Vegan nubuck + airmesh



SATURN CARBON PA381371

SIZE RANGE: 35-47 UNISEX / WIDTH: 11
OUTSOLE: Semirigid
Knitted textile

DEAMBULO LINE



Features

Classic line, elegant and light, best seller in shops, appreciated for its extreme comfort.

The sole is biomechanical to reduce joint stress and rebalance pressure peaks.

Deambulo line is ideal for rheumatic and diabetic patients in risk class 1.

Width
12

Biomechanical outsole
FLEXIBLE



The 12 width makes them particularly suitable for feet that also need custom-made insoles with a significant thickness.

The Flexpell has a sandwich structure with a waterproof outer layer, a self-modelling intermediate layer with open cells that guarantees microcirculation of air and an inner layer in dermocompatible Lycra.

All models are self-modelling and the linings are made with seamless technology to contain slight deformities and grippy fingers.

OUTSOLE FOCUS

- Flexible timing rocker® / anti-slip pads
- Tread / high abrasion resistance polyurethane



NEW

DEAMBULO L DK BLU SA203

SIZE RANGE: 39-47 / WIDTH: 12
OUTSOLE: Flexible
Vegan nubuck + stretch textile



365

DEAMBULO L BLACK SA200

SIZE RANGE: 39-47 / WIDTH: 12
OUTSOLE: Flexible
Setaflex + nylon

WOMEN'S COLLECTION - SPRING / SUMMER 2024

SANDY
WIDTH: 10,5



**ALIPES EPOQUE
DARK BLU**
SR101630
SIZE RANGE: 35-42



**ALIPES EPOQUE
MINT GREEN**
SR101637
SIZE RANGE: 35-42



**ALIPES EPOQUE
PASTEL PINK**
SR101639
SIZE RANGE: 35-42



**ALIPES ODYSSEY
DENIM BLU**
SR102030
SIZE RANGE: 35-42



**ALIPES ODYSSEY
BEIGE**
SR102035
SIZE RANGE: 35-42



**ALIPES ODYSSEY
RED**
SR102039
SIZE RANGE: 35-42



**ALISUN TAHITI
BRONZE**
SR102105
SIZE RANGE: 35-42



**ALISUN TAHITI
MINT GREEN**
SR102107
SIZE RANGE: 35-42



**ALISUN TAHITI
SILVER**
SR102108
SIZE RANGE: 35-42



**ALISUN DESERT
AZURE**
SR102270
SIZE RANGE: 35-42



**ALISUN DESERT
HONEY GOLD**
SR102275
SIZE RANGE: 35-42



**ALISUN DESERT
LIGHT RED**
SR102279
SIZE RANGE: 35-42



**MELODY LEATHER
JEANS**
SR116610
SIZE RANGE: 35-42



**MELODY LEATHER
WHITE**
SR116614
SIZE RANGE: 35-42



**MELODY LEATHER
LIME**
SR116617
SIZE RANGE: 35-42



**MELODY LEATHER
RED**
SR116619
SIZE RANGE: 35-42



**SUSAN LEATHER
DENIM BLUE**
SR106300
SIZE RANGE: 35-42



**SUSAN BAROQUE
PASTEL PINK**
SR106339
SIZE RANGE: 35-42



**KELLY TAHITI
SILVER**
SR117108
SIZE RANGE: 35-42



**KELLY LEATHER
RED**
SR117109
SIZE RANGE: 35-42



**KELLY OCEAN
NAVY BLU**
SR117130
SIZE RANGE: 35-42



**KELLY ODYSSEY
BEIGE**
SR117135
SIZE RANGE: 35-42



**MAYA OCEAN
BEIGE**
SR101935
SIZE RANGE: 35-42



**MAYA PLAYA
MULTICOLOUR**
SR101937
SIZE RANGE: 35-42



**ZEA LEATHER
NAVY BLU**
SR105100
SIZE RANGE: 35-42



**ZEA LEATHER
WHITE**
SR105104
SIZE RANGE: 35-42



**ZEA OCEAN
BEIGE**
SR105135
SIZE RANGE: 35-42



**ZEA PLAYA
MULTICOLOUR**
SR105137
SIZE RANGE: 35-42



**VALERY SHINING
BLU**
SR114805
SIZE RANGE: 35-42



**ANGEL TAHITI
BRONZE**
SR116630
SIZE RANGE: 35-42



**ANGEL EPOQUE
DARK BLUE**
SR116637
SIZE RANGE: 35-42



**ANGEL EPOQUE
MINT GREEN**
SR116637
SIZE RANGE: 35-42



**AIDA TAHITI
SILVER**
SR102208
SIZE RANGE: 35-42



**AIDA ODYSSEY
BEIGE**
SR102235
SIZE RANGE: 35-42

WOMEN'S COLLECTION - SPRING / SUMMER 2024

SANDY AIR
WIDTH: 10,5



**PATRIZIA AIR II
WHITE**
SR103913
SIZE RANGE: 35-42



**PATRIZIA AIR II
DARK BLUE**
SR103910
SIZE RANGE: 35-42

MODULA
WIDTH: 10



**POSITANO KOMODO
DARK BLUE**
SR685001
SIZE RANGE: 35-41



**POSITANO KOMODO
LIGHT GOLD**
SR685005
SIZE RANGE: 35-41



**CAPRI
DARK IRON**
SR685101
SIZE RANGE: 35-41



**CAPRI KYOTO
SILVER**
SR685108
SIZE RANGE: 35-41

MODULA
WIDTH: 10



**EGADI KYOTO
BLACK**
SR685201
SIZE RANGE: 35-41



**EGADI PERLE'
WHITE**
SR685204
SIZE RANGE: 35-41



**VENICE KOMODO
DARK BLUE**
SR685301
SIZE RANGE: 35-41



**VENICE KOMODO
PERLE' GOLD**
SR685304
SIZE RANGE: 35-41



**VENICE KYOTO
SILVER**
SR685308
SIZE RANGE: 35-41



**ROMINA YATCHING
BLUE**
SR632000
SIZE RANGE: 34-42



**ROMINA YATCHING
ICE**
SR632004
SIZE RANGE: 34-42



**ROMINA YATCHING
RED**
SR632009
SIZE RANGE: 34-42



**ROMINA WOVEN
SUNFLOWER**
SR632005
SIZE RANGE: 34-42



**ROMINA WOVEN
NAVY**
SR631007
SIZE RANGE: 34-42



**CLOE CHARME
NAVY**
SR632130
SIZE RANGE: 34-42



**CLOE VICTORIAN
BLACK**
SR632131
SIZE RANGE: 34-42

ASOLO
WIDTH: 11



**CLOE DROPS
ICE**
SR632134
SIZE RANGE: 34-42



**CIPRO CRAFT
LIGHT GOLD**
SR630935
SIZE RANGE: 34-42



**MONICA WOVEN
SUNFLOWER**
SR632205
SIZE RANGE: 34-42



**MONICA WOVEN
NAVY**
SR632230
SIZE RANGE: 34-42



**MONICA SABLE'
MINT GREEN**
SR632237
SIZE RANGE: 34-42



**MONICA SABLE'
RED**
SR632239
SIZE RANGE: 34-42



**SELENA CRAFT
NAVY BLUE**
SR631730
SIZE RANGE: 34-42



**SELENA CRAFT
LIGHT GOLD**
SR631735
SIZE RANGE: 34-42



**YASMINE CHARME
NAVY BLUE**
SR631830
SIZE RANGE: 34-42



**YASMINE CHARME
SILVER**
SR631834
SIZE RANGE: 34-42



**YASMINE CHARME
ROSE**
SR631839
SIZE RANGE: 34-42



**YASMINE VICTORIAN
BLACK**
SR631831
SIZE RANGE: 34-42

WOMEN'S COLLECTION - SPRING / SUMMER 2024

WELLWALK
WIDTH: 12-13,5



**CRISTAL PERLE'
PLATINUM**
SR609135
SIZE RANGE: 35-41



**MIYA PERLE'
SILVER**
SR608138
SIZE RANGE: 35-41



**MERCURY PERLE'
SILVER**
SR605238
SIZE RANGE: 35-41



**MERCURY
BEIGE**
SR603085
SIZE RANGE: 35-41

SUPER LIGHT
WIDTH: 12



**MERCURY EVO CRAFT
NAVY BLUE**
SR605130
SIZE RANGE: 35-41



**MERCURY EVO PERLE'
PLATINUM**
SR605138
SIZE RANGE: 35-41

SNEAKER CITY
WIDTH: 10-11



**SHARON LEATHER
BLUE**
SR400100
SIZE RANGE: 36-42



**SHARON LEATHER
ICE**
SR400108
SIZE RANGE: 36-42



**SIENNA
WHITE DENIM**
SR400230
SIZE RANGE: 36-42



**SIENNA
BEIGE YELLOW**
SR400237
SIZE RANGE: 36-42



**TRACY ZIP
WHITE**
SR400304
SIZE RANGE: 36-42



**TRACY ZIP
BEIGE**
SR400305
SIZE RANGE: 36-42



**SHELLY VELCRO
OYSTER GREY**
SR713497
SIZE RANGE: 35-41



**SHELLY LACE
OYSTER GREY**
SR713498
SIZE RANGE: 35-41

ACTIVITY
WIDTH: 11-12



**GINGER LACE
SUMMER GREEN**
PA201337
SIZE RANGE: 35-42



**GINGER VELCRO
SUMMER GREEN**
PA201437
SIZE RANGE: 35-42



**GINGER VELCRO
HEAVEN SKY**
PA201430
SIZE RANGE: 35-42



**FANCY EVO VELCRO
LEATHER IVORY**
PA201304
SIZE RANGE: 35-42



**FANCY EVO
LEATHER IVORY**
PA201334
SIZE RANGE: 35-42



**FANCY EVO
VELCRO BLUETTE**
PA201335
SIZE RANGE: 35-42



**FANCY EVO
BLUETTE**
PA201330
SIZE RANGE: 35-42



**FANCY EVO
RED**
PA20139
SIZE RANGE: 35-42



**FANCY EVO
BLACK**
PA20151
SIZE RANGE: 35-42



**ZEPHYR W
HEAVEN SKY**
PA20981
SIZE RANGE: 35-42



**ZEPHYR W
PINK**
PA20982
SIZE RANGE: 35-42



**ZEPHYR W
AIR WHITE**
PA20985
SIZE RANGE: 35-42



**ZEPHYR W
LEATHER WHITE**
PA20985
SIZE RANGE: 35-42



**NEXT
SILVER**
PA20378
SIZE RANGE: 35-42

WOMEN'S COLLECTION - SPRING / SUMMER 2024

ACTIVITY
WIDTH: 11-12



**NEXT EVO
DARK BLACK**
PA20381

SIZE RANGE: 35-47 unisex



**PALLADIO
BEIGE**
PA20475

SIZE RANGE: 36-48 unisex



**FREEDOM WR
GREY**
PA34508

SIZE RANGE: 35-47 unisex



**SATURN
BEIGE**
PA381371

SIZE RANGE: 35-42



**SATURN
PLUM**
PA381377

SIZE RANGE: 35-42



**SATURN
BLU**
PA381380

SIZE RANGE: 35-47 unisex



**SATURN
CARBON**
PA381371

SIZE RANGE: 35-47 unisex

DEAMBULO
WIDTH: 12



**VIA LEATHER
NAVY BLUE**
SA24470

SIZE RANGE: 35-41



**VIA LEATHER
LIGHT BEIGE**
SA24478

SIZE RANGE: 35-41



**VIA LEATHER
ROSE BRONZE**
SA24479

SIZE RANGE: 35-41



**FLY
ROSE BRONZE**
SA572

SIZE RANGE: 35-41



**FLY
LIGHT SKY**
SA577

SIZE RANGE: 35-41



MEN'S COLLECTION - SPRING / SUMMER 2024

CLASSIC
WIDTH: 11-11,5-12



BOTERO 11 FORATO SAND
SD374062
SIZE RANGE: 39-47



BOTERO 11 FORATO DARK BLUE
SD374063
SIZE RANGE: 39-47



BOTERO 12 FORATO BLACK
SR30891
SIZE RANGE: 39-48



MICHELANGELO BLACK
SR104011
SIZE RANGE: 40-46



RAFFAELLO BROWN
SR108122
SIZE RANGE: 40-46

CASUAL
WIDTH: 11-12-14



DARWIN VELCRO ARMY GREEN
SR320443
SIZE RANGE: 39-47



DARWIN DCS ZIP BLACK
SR320571
SIZE RANGE: 39-46



TURNER NAVY BLUE
PA381170
SIZE RANGE: 39-47



TURNER TAUPE
PA381175
SIZE RANGE: 39-47



TAYLOR WHITE
PA381274
SIZE RANGE: 39-47

ACTIVITY
WIDTH: 12



ZEPHYR M NAVY
PA20980
SIZE RANGE: 39-47



ZEPHYR M AIR WHITE
PA20984
SIZE RANGE: 39-47



ZEPHYR M LIME
PA20989
SIZE RANGE: 39-47



HERO EVO CARBON
PA300831
SIZE RANGE: 39-47



HERO EVO GREY
PA30068
SIZE RANGE: 39-47



PALLADIO BEIGE
PA20475
SIZE RANGE: 36-48 unisex



FREEDOM WR GREY
PA34508
SIZE RANGE: 35-47 unisex



NEXT EVO DARK BLACK
PA20381
SIZE RANGE: 35-47 unisex



SATURN BLU
PA381380
SIZE RANGE: 35-47 unisex



SATURN CARBON
PA381371
SIZE RANGE: 35-47 unisex

DEAMBULO
WIDTH: 12



DEAMBULO L DARK BLU
SA203
SIZE RANGE: 39-47



DEAMBULO L BLACK
SA200
SIZE RANGE: 39-47









VIA ERIZZO 123/C
CROCETTA DEL MONTELLO
31035 - TREVISO - ITALY
TEL. +39 0423 293111
FAX. 0423 622062

SALES@PODARTIS.COM
WWW.PODARTIS.COM

