



COMFORT WITHOUT COMPROMISES

From Podartis technique comes Stilè, a new brand that combines **comfort and elegance, fashion and well-being.**

The Stilè collection responds to the simple principle of “comfort without compromises”.

Regarding the quality of materials, Stilè offers a **fine range of soft, naturally tanned leathers and Made in Italy fabrics.**

All **anatomical insoles** in the collection are, in addition, **removable** to allow for the possible insertion of customized insoles.

**"IF YOU HAVE TO DO SOMETHING,
DO IT WITH *STILÈ*"**



"IN ORDER TO BE
IRREPLACEABLE,
ONE MUST ALWAYS
BE DIFFERENT."

Coco Chanel







JANIS DENIM/NAVY

GT101210 | SIZE RANGE: 36 - 42 (EU) | WIDTH: 10

Satin soft leather



SS/2024



JANIS ICE/SILVER

GT101218 | SIZE RANGE: 36 - 42 (EU) | WIDTH: 10

Satin soft leather









ELOISE ICE/SILVER

GT101118 | SIZE RANGE: 36 - 42 (EU) | WIDTH: 10

Satin soft leather + soft nubuck





ELOISE COGNAC/GOLD

GT101115 | SIZE RANGE: 36 - 42 (EU) | WIDTH: 10

Satin soft leather + soft nubuck





ABRIL DENIM/NAVY

GT101310 | SIZE RANGE: 36 - 42 (EU) | WIDTH: 10

Satin soft leather + satin suede





ABRIL WHITE/SILVER

GT101318 | SIZE RANGE: 36 - 42 (EU) | WIDTH: 10

Satin soft leather + satin suede







"ELEGANCE IS NOT
STANDING OUT, BUT
BEING REMEMBERED."

Giorgio Armani



ATENA NAVY/BLUE

GT101430 | SIZE RANGE: 36 - 42 (EU) | WIDTH: 10

Satin suede + suede







ATENA ICE

GT101434 | SIZE RANGE: 36 - 42 (EU) | WIDTH: 10

Satin suede + suede





ATENA COGNAC

GT101435 | SIZE RANGE: 36 - 42 (EU) | WIDTH: 10

Satin suede + suede







STILE
by Podartis

STILE
by Podartis



CHANTAL LEATHER WHITE

GT101504 | SIZE RANGE: 36 - 42 (EU) | WIDTH: 10

Soft calf leather



SS/2024



CHANTAL LEATHER BLACK

GT101501 | SIZE RANGE: 36 - 42 (EU) | WIDTH: 10

Soft calf leather





CHANTAL SATIN IVORY

GT101535 | SIZE RANGE: 36 - 42 (EU) | WIDTH: 10

Satin suede



SS/2024



CHANTAL SATIN LILAC

GT101539 | SIZE RANGE: 36 - 42 (EU) | WIDTH: 10

Satin suede





MALIKA LEATHER WHITE

GT101604 | SIZE RANGE: 36 - 42 (EU) | WIDTH: 10

Soft calf leather



SS/2024



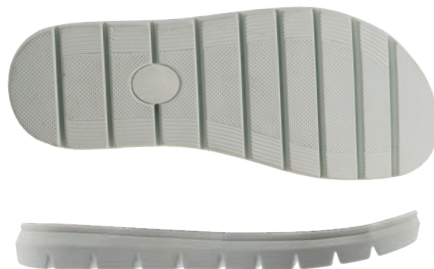




MALIKA LEATHER BLACK

GT101601 | SIZE RANGE: 36 - 42 (EU) | WIDTH: 10

Soft calf leather









ARIEL BEIGE

GT101635 | SIZE RANGE: 36 - 42 (EU) | WIDTH: 10

Suede + printed leather



SS/2024



ARIEL NAVY

GT101630 | SIZE RANGE: 36 - 42 (EU) | WIDTH: 10

Suede + printed leather









ROCHELLE BEIGE

GT101705 | SIZE RANGE: 36 - 42 (EU) | WIDTH: 10

Satin suede



SS/2024



ROCHELLE NAVY

GT101700 | SIZE RANGE: 36 - 42 (EU) | WIDTH: 10

Satin suede



**"FASHION CHANGES,
BUT STYLE ENDURES."**

Yves Saint Laurent





VIA ERIZZO 123/C
CROCETTA DEL MONTELLO
31035 - TREVISO - ITALY
TEL. +39 0423 293111
FAX. 0423 622062

SALES@PODARTIS.COM
WWW.PODARTIS.COM

