



 **PODARTIS**  
clinically tested footwear

---

**PRENO COLLECTION BOOK**  
**FALL / WINTER 2024**

Podartis specializes in the production of footwear, insoles, stockings, braces and materials for the prevention and treatment of the main walking pathologies such as hallux valgus, hammer toes, rheumatic foot, diabetic foot and post foot surgery.

The company's flagship product, the result of more than 30 years of research, is its cutting-edge solutions for the diabetic foot.

Every product made by the company is rigorously clinically tested to meet the highest quality standards in the sector and guarantee maximum protection and comfort.

Continuous product innovation has its source in a constant commitment to research, linked to medical-scientific comparisons and collaborations with some of the most authoritative international experts.

The patents that characterize Podartis products are direct evidence of the company's mission: to help people walk well to live better.



# NEW COLLECTION

FALL / WINTER 2024

## WOMEN'S collection

- 10. SANDY line
- 20. CLASSIC line
- 26. SNEAKERS CITY line
- 32. DEAMBULO line
- 34. ACTIVITY line

## MEN'S collection

- 44. CLASSIC line
- 52. DEAMBULO line
- 54. ACTIVITY line



# KEY CONCEPT - FW COLLECTION 2023/2024

## UPDATES IN THE ARTICLES PROPOSAL

In the new collection, the balance within the flip-flop line between open and closed-top items has been revised.

In fact, the current climate changes are making the mid-seasons warmer and warmer, and the choice and use of open styles is becoming wider and more widespread for flip-flops even in the winter sphere.



## QUALITY AND ATTITUDE OF MATERIALS

A cornerstone of the collection is the use of durable and washable materials exclusively from high-quality Italian manufactures linked to the world of the most prestigious Made in Italy. Consumer demand for easily cleanable uppers has also led to a rebalancing in flip-flops by reducing models with more delicate fabrics and felts in favor of leather and stretch uppers that are more resistant to the possible stains of the domestic sphere.

Also noticeably increased in all footwear lines is the proposal for uppers made of leather and durable Flexpell® for more practical use in cases of rain and bad weather. Resistance and toughness of models also ties in with the important issue of product durability, a point increasingly valued by consumers when choosing and purchasing.

## MODELS WITH ZIP CLOSURES

The increase in models with zipper closures within the footwear collection actively continues. The use of this solution facilitates and speeds up the act of putting on and taking off the shoe remaining, especially for women, also a trendy and ornamental detail widely used by both comfort and more fashion brands..

Debuting in the women's winter collection with zippers are items **Dorothy, Sienna, Tracy e Cher**. In the men's, on the other hand, the articles **Martin e Tiziano zip II** make their debut with zipper closure.

## REFRESH MATERIALS LINE DEAMBULO

In this season in the iconic technical/pathological product area such as the Deambulo we propose a version of the **Deambulo Sport** with a shiny effect faux leather upper, in order to give a fresh touch to the product making it aesthetically less "orthopedic" in the eyes of female consumers. In the men's area we propose instead the **Deambulo leather** in the new **dark grey** variant.



# COLORS CONCEPT - FW COLLECTION 2023/2024

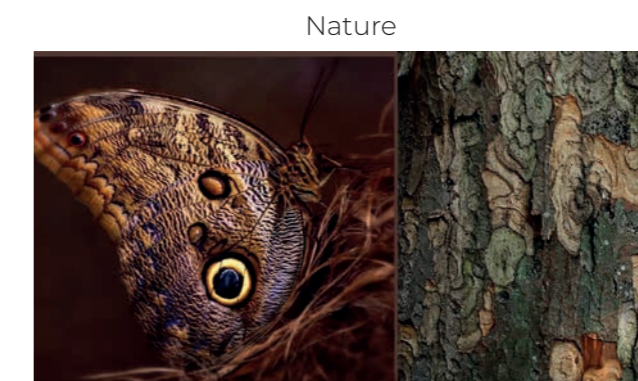
In fall winter 2024/25, consumers will be grappling with issues related to economic, socio-political situations and environmental changes. A general sense of uncertainty about the future will remain a dominant force for all generations. The main color and material trends reflect this perspective and are declined through the 3 themes of: **Wellness, Nature, and Technology**.

## WELLNESS

Well-being will become an increasingly important consumer value. Having a sense of calm and control in our lives is conveyed by materials that generate positive feelings, reassurance and functionality through **soft, soothing colors** (neutral beiges and diluted shades of blue). is the theme of boiled wools (Arianna Country, Arianna wool ice blue).

## NATURE

As all consumer groups gain a broader understanding of environmental issues, caring for the planet will become as important as taking care of ourselves. The need to regain authentic contact with nature is expressed through "muddy" **earthy browns and autumnal shades of green** (Zephyr leather brown - Zephyr army green), colors offered on 100% vegan items.



## TECHNOLOGY

We will see the **return of dark hues**, linked to suggestions of space exploration. The endless dots of the stellar panorama (alipad cosmic) and the fantastic colors of nebulae (alipad flambé) serve as inspiration for materials in **dark tones with elegant light reflections**, while particular metallic tones typical of space suits are expressed in **laminated leathers with a special effect** (Zephyr dark Gold). In addition, laminated chamois represent rocky patterns inspired by mysterious Martian landscapes (alipes Rock).



# PODARTIS VEGAN

More and more customers are requesting vegan footwear, either for ethical reasons (to use “cruelty free” footwear, i.e., that does not use materials of animal origin), or to obviate allergies to metals, or for a simple desire to be in line with the green dynamics now ubiquitous in our society.

It must be said, in support of those who make this choice, that animal husbandry is a major contributor to climate change, and leather is as much a part of animal husbandry as meat. Consider that 80% of the deforestation rate in the Amazon is related to livestock farming, which includes leather production.

Vegan items in the women’s collection include the **Arianna slipper**, **Palladio sandal**, **3 Deambulo items** (2 Via and 1 Deambulo) and **4 Activity Zephyr variants**.

Vegan items in the men’s collection are the **2 Alan slippers**, **Palladio sandal**, **2 Activity Hero Evo** and **4 Activity Zephyr variants**.



# PODARTIS GOES GREEN

The absolute necessity of sustainable and conscious choice, in the context of the materials used in the collection, is more than ever a duty and a commitment in the face of the sudden changes taking place in the environmental climate.

Here are the main steps in the area of sustainability present in the collection:

- We use hides from LGW GOLD certified tanneries. LWG certification is a seal of approval for companies operating in the leather world, namely tanneries. It is an award that recognizes companies in the industry that manage environmental impact and sustainable economy from a system perspective. This environmental audit protocol was developed by leather brands and manufacturers, with input from NGOs such as WWF and Greenpeace. It is updated regularly to ensure that it remains relevant and takes into account the needs and evolution of the industry.
- We use raw materials from suppliers with 100% green energy sources.
- We use ecopell from companies registered with the SEAQUAL INITIATIVE community. Sequal

initiative is a community of people, organizations, and companies working together to help clean up our oceans, raise awareness of marine litter, and highlight those who help fight it.

- The 2 **Hero Evo** items (PA30069 militar green and PA300931 black) have INESCOP-certified vegan microfiber uppers (verified by infrared spectroscopy). These microfibers are state-of-the-art products that stand out for their breathability, light weight, and high durability. Due to their breathable and absorbent properties, these products eliminate moisture, odors, and improve comfort and hygiene.
- The “python” stretch used in the **Susan phyton dark brown** (SR101913), **Janet phyton dark brown** (SR102573) e **Janet phyton bordeaux** (SR102579) women’s slippers is made from recycled polyester yarn (also using recycled bottle polymers in part). The material is produced following the Global Recycled Standard (GRS) protocol.
- The stretch used in the article Sneaker City **Cher black** (SR501711) on the cuffs, tongue, and tray is made from recycled polyester yarn and follows the Global Recycled Standard (GRS) protocol.



WOMEN'S  
COLLECTION

FALL  
WINTER  
2024 / 2025



# SANDY LINE



## Features

The Sandy line aims for maximum functionality, adapting to the foot of each patient.

Podartis **Seamless Technology** reduces the presence of noticeable seams within the product to avoid painful chafing and ensure maximum protection. All inner linings feature high-density materials for better comfort and feature, in the layer in contact with the foot, Lycra® Dermocompatible.

Width **10,5** | Biomechanical outsole **FLEXIBLE**



The new Sandy Evo Biomechanical Outsole protects the joints of the foot better more during the gait phases and ensures a performant redistribution of pressures. The 20mm physiological heel ensures the correct posture of the patient.

The high-density Eva + PU compound of the Sandy footbed provides continuous step cushioning and effective protection especially to rheumatic patients. Dermocompatible microfiber cover.

The 10.5 fitting combined with the products' self-fit ensures an excellent fit for even the most demanding feet.

### SEAMLESS TECHNOLOGY

Less seams. Less pain.

### FLEXPELL®

Self-molding upper.



## OUTSOLE FOCUS

- Biomechanical rocker / Protects joints
- 20 mm heel / correct posture
- Non-slip inserts in the tread



## SANDY / SABOT



NEW

**JANET PHYTON DARK BROWN SR102573**

SIZE RANGE: 35-42 / WIDTH: 10,5  
OUTSOLE: flexible  
Semi-glossy nappa leather + stretch python print



NEW

**JANET PHYTON BORDEAUX SR102579**

SIZE RANGE: 35-42 / WIDTH: 10,5  
OUTSOLE: flexible  
Semi-glossy nappa leather + stretch python print



NEW

**JANET SELTZ DARK BLUE SR102570**

SIZE RANGE: 35-42 / WIDTH: 10,5  
OUTSOLE: flexible  
Semi-glossy nappa leather + stretch metallic print

## SANDY / SABOT



NEW

**PATRIZIA VICTORIAN BLACK SR103921**

SIZE RANGE: 35-42 / WIDTH: 10,5  
OUTSOLE: flexible  
Semi-glossy nappa leather + stretch printed velvet



NEW

**PATRIZIA DECOR DARK BLU SR104920**

SIZE RANGE: 35-42 / WIDTH: 10,5  
OUTSOLE: flexible  
Semi-glossy nappa leather + stretch printed velvet



NEW

**PATRIZIA SELTZ DARK BRONZE SR105973**

SIZE RANGE: 35-42 / WIDTH: 10,5  
OUTSOLE: flexible  
Satin leather + stretch metallic print



NEW

**PATRIZIA VICTORIAN DARK GREEN SR103927**

SIZE RANGE: 35-42 / WIDTH: 10,5  
OUTSOLE: flexible  
Semi-glossy nappa leather + stretch printed velvet



NEW

**PATRIZIA DECOR DARK GREY SR104928**

SIZE RANGE: 35-42 / WIDTH: 10,5  
OUTSOLE: flexible  
Satin leather + stretch printed velvet



## SANDY / SABOT



NEW

**ARIANNA DOTS BLACK SR109671**

SIZE RANGE: 35-42 / WIDTH: 10,5  
OUTSOLE: flexible  
Faux leather + Stretch 3D points



NEW

**ARIANNA DOTS DARK BLUE SR109770**

SIZE RANGE: 35-42 / WIDTH: 10,5  
OUTSOLE: flexible  
Nubuck leather + Stretch 3D points



NEW

**ARIANNA SELTZ DARK BLUE SR109670**

SIZE RANGE: 35-42 / WIDTH: 10,5  
OUTSOLE: flexible  
Metallic leather + stretch metallic print

## SANDY / SABOT



NEW

**ARIANNA WOOL EVO AVIO BLUE SR109560**

SIZE RANGE: 35-42 / WIDTH: 10,5  
OUTSOLE: flexible  
Patent nappa leather + stretch boiled wool



CARRY OVER FW23

**ARIANNA WOOL EVO SMOKE GREY SR109559**

SIZE RANGE: 35-42 / WIDTH: 10,5  
OUTSOLE: flexible  
Patent nappa leather + stretch boiled wool



NEW

**ARIANNA COUNTRY DARK BEIGE SR109567**

SIZE RANGE: 35-42 / WIDTH: 10,5  
OUTSOLE: flexible  
Suede + stretch boiled wool



NEW

**ARIANNA DOTS BORDEAUX SR109679**

SIZE RANGE: 35-42 / WIDTH: 10,5  
OUTSOLE: flexible  
Semi-gloss leather + Stretch 3D points



NEW

**ARIANNA DOTS DARK GREY SR109778**

SIZE RANGE: 35-42 / WIDTH: 10,5  
OUTSOLE: flexible  
Nubuck leather + Stretch 3D points



NEW

**ARIANNA SELTZ DARK BRONZE SR109673**

SIZE RANGE: 35-42 / WIDTH: 10,5  
OUTSOLE: flexible  
Metallic leather + stretch metallic print





## SANDY / TWO STRAPS ALIPES SLIPPER



NEW

### ALIPES ROCK BLACK SR101271

SIZE RANGE: 35-42 / WIDTH: 10,5  
OUTSOLE: flexible  
Printed satin suede



NEW

### ALIPES ROCK BLUE SR101270

SIZE RANGE: 35-42 / WIDTH: 10,5  
OUTSOLE: flexible  
Printed satin suede



NEW

### ALIPES ROCK DARK BRONZE SR101273

SIZE RANGE: 35-42 / WIDTH: 10,5  
OUTSOLE: flexible  
Printed satin suede

## SANDY / TWO STRAPS ALIPAD SLIPPER



NEW

### ALIPAD FLAMBÈ DK GREEN BURGUNDY SR101507

SIZE RANGE: 35-42 / WIDTH: 10,5  
OUTSOLE: flexible  
Multicolor patent leather



NEW

### ALIPAD FLAMBÈ BLUETTE GREY SR101500

SIZE RANGE: 35-42 / WIDTH: 10,5  
OUTSOLE: flexible  
Multicolor patent leather



NEW

### ALIPAD COSMIC NIGHT GREEN SR101337

SIZE RANGE: 35-42 / WIDTH: 10,5  
OUTSOLE: flexible  
Milleluci suede



NEW

### ALIPAD COSMIC NIGHT BLUE SR101330

SIZE RANGE: 35-42 / WIDTH: 10,5  
OUTSOLE: flexible  
Milleluci suede

## SANDY / SINGLE VELCRO SLIPPER



NEW

### SUSAN PHYTON DARK BROWN SR101913

SIZE RANGE: 35-42 / WIDTH: 10,5  
OUTSOLE: flexible  
Semi-glossy nappa leather + stretch python print



NEW

### SUSAN SELTZ DARK BLU SR101910

SIZE RANGE: 35-42 / WIDTH: 10,5  
OUTSOLE: flexible  
Semi-glossy nappa leather + stretch metallic print



# CLASSIC LINE



## Features

The interpretation we developed for the Classic segment follows the theme of basic and classic colors.

In line with post-pandemic market trends, we propose a wide range of black variants modulated through various materials (tassels, semi-gloss calfskins, glossy patent leather) and a return of variants in brown and dark brown tones.

Width  
**10,5**  
**11,5**

Biomechanical outsole  
**FLEXIBLE**



The new biomechanical Dana polyurethane sole has two rubber lugs in the tread with non-slip textures.

This solution combines light weight with increased grip in the winter months on all surfaces, bringing improvements in both style and performance over the previous Deva sole.



## OUTSOLE FOCUS

- Shock-absorbing islands / High wear resistance
- 25mm heel / better posture



### SEAMLESS TECHNOLOGY

Less seams. Less pain.

### FLEXPELL®

Self-moldable perforated upper.  
Maximum breathability.

CLASSIC / ELEGANT



NEW

**STEPHANIE II DOTS BLACK SR218311**

SIZE RANGE: 35-42 / WIDTH: 11,5  
OUTSOLE: flexible  
Nappa leather + Stretch 3D points



NEW

**STEPHANIE II DOTS DARK GREY SR218318**

SIZE RANGE: 35-42 / WIDTH: 11,5  
OUTSOLE: flexible  
Nappa leather + Stretch 3D points



CARRY  
OVER  
FW23

**LISA II BLACK SR218234**

SIZE RANGE: 35-42 / WIDTH: 11,5  
OUTSOLE: flexible  
Semi-glossy nappa leather + stretch





365

**ATLANTA VERNICE BLACK SR203621**

SIZE RANGE: 35-41 / WIDTH: 10,5  
OUTSOLE: flexible  
Laminated nappa leather and self-molding Flexpell®



NEW

**ATLANTA DARK BROWN SR203833**

SIZE RANGE: 35-41 / WIDTH: 10,5  
OUTSOLE: flexible  
Semi-glossy nappa leather + stretch satin



CARRY OVER FW23

**ANNA PYTHON DARK BROWN SR208226**

SIZE RANGE: 35-41 / WIDTH: 10,5  
OUTSOLE: flexible  
Python patent leather + python stretch



NEW

**SHARON PATENT BLACK SR401701**

SIZE RANGE: 36-42 / WIDTH: 10  
OUTSOLE: flexible  
Soft patent leather



NEW



**DOROTHY BLACK SR220131**

SIZE RANGE: 36-42 / WIDTH: 10,5  
OUTSOLE: flexible  
Semi-gloss leather + stretch econappa



NEW



**DOROTHY DARK GREY SR220133**

SIZE RANGE: 36-42 / WIDTH: 10,5  
OUTSOLE: flexible  
Satin leather + stretch faux leather



NEW

**SHARON DARK SILVER SR401708**

SIZE RANGE: 36-42 / WIDTH: 10  
OUTSOLE: flexible  
Satin leather

# SNEAKERS CITY LINE



## Features

From the need to introduce a “City Chic” style in line with current trends, Podartis developed the Activity City line.

The Sneakers style associated with the Timing Rocker® sole for a physiological and natural stride has made it one of the best-selling lines of recent seasons.

Width

**10**  
**11**

Biomechanical outsole

**SEMIRIGID**



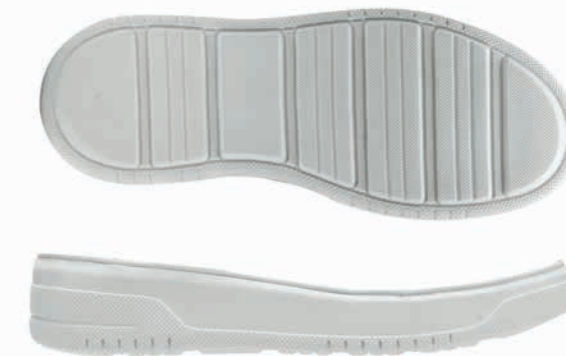
The new Softy sole, made of Italian-made EVA foam, is a biomechanical sole with extreme comfort, designed to reduce joint stress and rebalance pressure peaks.

The compound technology is designed to ensure lightness, softness and elasticity, but also abrasion and tear resistance, and good grip on dry and wet surfaces.



## OUTSOLE FOCUS

- 60% Semi-rigid / super-lightweight bi-density polyurethane
- 70% Semi-rigid / microporous Eva



### SEAMLESS TECHNOLOGY

Less seams. Less pain.

### CLOSING SYSTEM

“one-handed locking system” with zipper

SNEAKER CITY / **TRACY**



**TRACY BLACK SR601721**

SIZE RANGE: 36-42 / WIDTH: 10  
 OUTSOLE: flexible  
 Soft leather + stretch leather



SNEAKER CITY / **SIENNA**



**SIENNA LEATHER BLACK SR401231**

SIZE RANGE: 36-42 / WIDTH: 10  
 OUTSOLE: flexible  
 Soft leather + patent leather + stretch

SNEAKER CITY / **SHELLY**



**SHELLY VELCRO LEATHER BLACK SR716491**

SIZE RANGE: 35-41 / WIDTH: 11  
 OUTSOLE: flexible  
 Soft leather + patent leather + stretch



**SHELLY VELCRO LEATHER DARK GREY SR716498**

SIZE RANGE: 35-41 / WIDTH: 11  
 OUTSOLE: flexible  
 Soft leather + patent leather + econappa stretch

SNEAKER CITY / **CHER**



**TRACY DARK BRONZE SR601733**

SIZE RANGE: 36-42 / WIDTH: 10  
 OUTSOLE: flexible  
 Leather satin + stretch metallic print



**CHER BLACK SR501711**

SIZE RANGE: 36-42 / WIDTH: 10  
 OUTSOLE: flexible  
 Soft leather + stretch leather



**SIENNA LEATHER GREY BLUE SR401238**

SIZE RANGE: 36-42 / WIDTH: 10  
 OUTSOLE: flexible  
 Soft leather + metallic leather + stretch



**SHELLY LACE LEATHER DARK BLU SR715490**

SIZE RANGE: 35-41 / WIDTH: 11  
 OUTSOLE: flexible  
 Soft leather + metallic leather + econappa stretch





# DEAMBULO LINE



## Features

Classic, elegant and lightweight line, a best seller in stores, prized for its extreme comfort.

The sole is biomechanical to reduce stress joints and rebalance pressure peaks.

## OUTSOLE FOCUS

- Flexible timing rocker® / non-slip pads
- Polyurethane tread with high resistance to abrasion



Width  
**12**

Biomechanical outsole  
**FLEXIBLE**



Fitting 12 makes them particularly suitable for feet that need even custom-made insoles of considerable thickness.

The Flexpell has a sandwich structure with an outer layer that is waterproof, a self-molding open-cell middle layer that ensures microcirculation of air, and an inner layer made of Dermocompatible Lycra.

All models are self-molding and the linings are made with seamless technology to contain slight deformities and snug fingers.

## DEAMBULO / DEAMBULO



NEW

**DEAMBULO SPORT SHINE BLACK SA301**

SIZE RANGE: 35-41 / WIDTH: 12  
OUTSOLE: flexible  
Satin faux leather + stretch satin faux leather

## DEAMBULO / VIA



CARRY OVER FW22

**VIA LEATHER BLACK SA24476**

SIZE RANGE: 35-41 / WIDTH: 12  
OUTSOLE: flexible  
Faux leather + stretch faux leather



NEW

**VIA LEATHER DARK BROWN SA24483**

SIZE RANGE: 35-41 / WIDTH: 12  
OUTSOLE: flexible  
Faux leather + stretch faux leather



NEW

**VIA LEATHER IRON GREY SA24488**

SIZE RANGE: 35-41 / WIDTH: 12  
OUTSOLE: flexible  
Faux leather + stretch faux leather

# LINEA ACTIVITY



## Features

For a decade, Podartis has been promoting movement and adapted physical activity. Studies clinical studies have shown that the shoes Activity significantly improve the parameters of gait and posture.

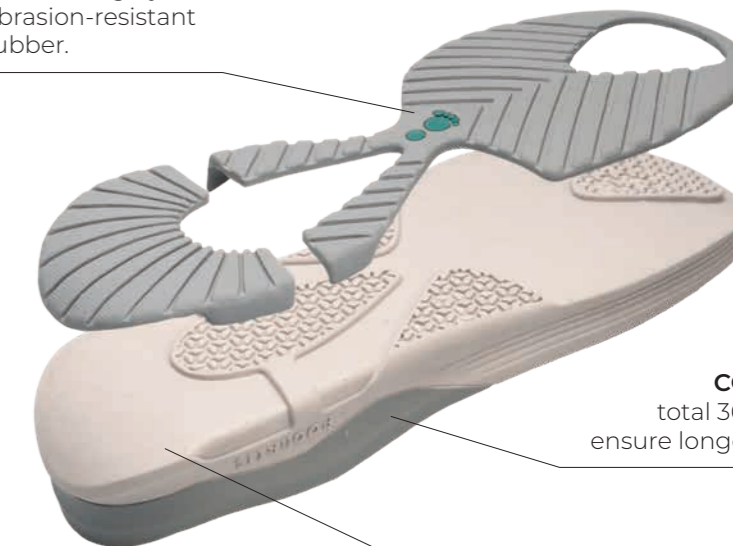
Key features: Seamless upper, stabilizing and extended spurs, various fits, semi-rigid biomechanical outsole.

Width  
**11-12**

Biomechanical outsole  
**SEMIRIGID**



**OUTSOLE**  
made of highly  
abrasion-resistant  
rubber.



**COVER**  
total 360° to  
ensure longer life.

**MIDSOLE**  
high density EVA.

- Seamless upper
- Stabilising and extended backcounters
- Different widths





NEW

**GINGER VELCRO LEATHER BLACK PA201871**

SIZE RANGE: 35-42 / WIDTH: 11  
OUTSOLE: semirigid  
Soft leather + patent leather + stretch snake print



NEW

**GINGER VELCRO DARK BLUE PA201870**

SIZE RANGE: 35-42 / WIDTH: 11  
OUTSOLE: semirigid  
Leather + semi-glossy nappa leather + stretch



NEW

**GINGER VELCRO NIGHT GREEN PA201877**

SIZE RANGE: 35-42 / WIDTH: 11  
OUTSOLE: semirigid  
Suede + patent leather + stretch





ACTIVITY / **FANCY**



NEW

**FANCY EVO LEATHER BLACK PA201371**

SIZE RANGE: 35-42 / WIDTH: 12  
OUTSOLE: semirigid  
Soft leather + patent leather + snake print stretch



NEW

**FANCY EVO NIGHT GREEN PA201377**

SIZE RANGE: 35-42 / WIDTH: 12  
OUTSOLE: semirigid  
Suede + patent leather + stretch





## ACTIVITY / ZEPHYR



NEW

**ZEPHYR W LEATHER DARK GOLD PA211187**

SIZE RANGE: 35-42 / WIDTH: 12  
OUTSOLE: semirigid  
Metallic faux leather + tecnofilm



NEW

**ZEPHYR W SHINE BLACK PA212281**

SIZE RANGE: 35-42 / WIDTH: 12  
OUTSOLE: semirigid  
Nylon satin + tecnofilm

## ACTIVITY / PALLADIO



CARRY OVER SS24

**PALLADIO DARK GREY PA20478**

SIZE RANGE: 36-48 unisex / WIDTH: 12  
OUTSOLE: semirigid  
Faux leather + nylon mesh

## ACTIVITY / FREEDOM



NEW

**ZEPHYR SHINE BLUE PA212282**

SIZE RANGE: 35-42 / WIDTH: 12  
OUTSOLE: semirigid  
Nylon satin + tecnofilm



NEW

**ZEPHYR W SHINE BURGUNDY PA212289**

SIZE RANGE: 35-42 / WIDTH: 12  
OUTSOLE: semirigid  
Nylon satin + tecnofilm



CARRY OVER FW22

**FREEDOM EVO WR BLACK PA34509**

SIZE RANGE: 35-46 unisex / WIDTH: 12  
OUTSOLE: semirigid  
WR suede + rubberized leather + Flexpell®



MEN'S  
COLLECTION

FALL  
WINTER  
2024 / 2025



# CLASSIC LINE



## Features

The Classic Line for Men has always been one of Podartis' cornerstones to offer an elegant product for the business man combining technicality and functionality of the products.

Width

11

12

14

Biomechanical outsole

**FLEXIBLE**



**SEMIRIGID**



**RIGID**



The Timing Rocker® Podartis micromachined outsole is 70 percent semi-rigid and reduces the energy demand for stride, ensuring a smooth transition between the moment of contact and propulsion.

Ideal for juniors - seniors over 55, with reduced joint mobility and progressive bone decalcification. Particularly suitable for patients with diabetes or rheumatics in risk grade 2. To increase the performance of efficacy and protection, the use of treads among the best performing in terms of abrasion resistance and cushioning developed in collaboration with Vibram.

Podartis Seamless technology reduces the presence of visible seams inside the product to avoid painful chafing and ensure maximum protection. All inner linings feature high density for added comfort.

The choice of socks also accommodates feet with deformities major deformities, fully responding to all degrees of risk provided by the Triage International Diabetic and Rheumatic Triage.

- Shock-absorbing heel
- Vibram tread
- High abrasion resistance



## OUTSOLE FOCUS

- Timing rocker / biomechanical outsole with micro
- Support structure / density 330kg / m3
- Heel / pod50 density 240kg / m3 shore to 50



CLASSIC / **SABOT**



NEW

**ALAN BROWN SR213133**

SIZE RANGE: 39-47 / WIDTH: 12  
OUTSOLE: flexible  
Faux leather + stretch faux leather



365

**LEONARDO BLACK SR30281**

SIZE RANGE: 40-46 / WIDTH: 12  
OUTSOLE: flexible  
Suede + leather + Flexpell®



NEW

**ALAN DARK GREY SR213138**

SIZE RANGE: 39-47 / WIDTH: 12  
OUTSOLE: semirigid  
Faux leather + stretch faux leather



CLASSIC / **CASUAL**



NEW

**TURNER VELCRO BLACK PA381471**

SIZE RANGE: 39-47 / WIDTH: 12  
OUTSOLE: semirigid  
Soft cowhide leather



NEW

**TURNER LACE BLACK PA381271**

SIZE RANGE: 39-47 / WIDTH: 12  
OUTSOLE: semirigid  
Soft cowhide leather



NEW

**TURNER LACE BRANDY PA381273**

SIZE RANGE: 39-47 / WIDTH: 12  
OUTSOLE: semirigid  
Soft cowhide leather

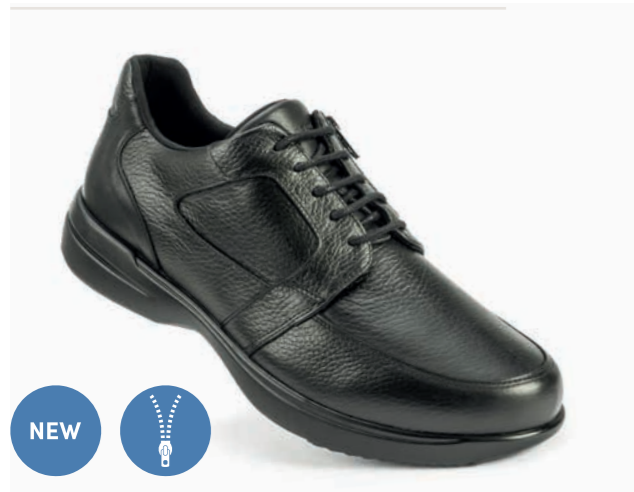


NEW

**TURNER LACE DARK BROWN PA381275**

SIZE RANGE: 39-47 / WIDTH: 12  
OUTSOLE: semirigid  
Soft cowhide leather





**TIZIANO 11 ZIP BLACK SD330231**

SIZE RANGE: 39-47 / WIDTH: 11  
 OUTSOLE: semirigid  
 Soft leather + thermoformable moose



**MARTIN DARK BLUE PA382170**

SIZE RANGE: 39-47 / WIDTH: 12  
 OUTSOLE: semirigid  
 Suede



**TIZIANO 14 ZIP BLACK SD320521**

SIZE RANGE: 39-47 / WIDTH: 14  
 OUTSOLE: semirigid  
 Soft leather + thermoformable moose



**MARTIN LEATHER BLACK PA382171**

SIZE RANGE: 39-47 / WIDTH: 12  
 OUTSOLE: semirigid  
 Soft cowhide leather



**BOTERO 14 RIGID BLACK SD370221**

SIZE RANGE: 39-46 / WIDTH: 14  
 OUTSOLE: rigid  
 Soft leather + nubuck leather + Flexpell®



**BOTERO 14 SEMIRIGID BLACK SR370221**

SIZE RANGE: 39-46 / WIDTH: 14  
 OUTSOLE: semirigid  
 Soft leather + nubuck leather + Flexpell®



**DARWIN VELCRO LEATHER BLACK SR320444**

SIZE RANGE: 39-46 / WIDTH: 12  
 OUTSOLE: semirigid  
 Soft leather + Flexpell



**BOTERO 11 CLAY BROWN SD370235**

SIZE RANGE: 39-47 / WIDTH: 11  
 OUTSOLE: semirigid  
 Soft leather + Flexpell®



**BOTERO 11 BLACK SD370291**

SIZE RANGE: 39-47 / WIDTH: 11  
 OUTSOLE: semirigid  
 Soft leather + Flexpell®





# DEAMBULO LINE




## Features

Classic, elegant and lightweight line, a best seller in stores, appreciated for its extreme comfort.

The sole is biomechanical to reduce joint stress and rebalance peak pressure.

Width  
**12**

Biomechanical outsole  
**FLESSIBILE** 

The 12-gauge fit makes them particularly suitable for feet that also require custom-made insoles of considerable thickness.

Flexpell® has a sandwich structure with an outer layer that is waterproof, a self-molding open-cell middle layer that ensures microcirculation of air, and an inner layer made of Lycra dermocompatible.

All models are self-molding and the linings are made with seamless technology to contain slight deformities and snug fingers.

## OUTSOLE FOCUS

- Flexible timing rocker® / non-slip pads
- Polyurethane tread with high resistance to abrasion



## CLASSIC / DEAMBULO



**DEAMBULO L LEATHER BLACK SA201**

SIZE RANGE: 39-47 / WIDTH: 12  
OUTSOLE: flexible  
Faux leather + leather



**DEAMBULO L DARK GREY SA205**

SIZE RANGE: 39-47 / WIDTH: 12  
OUTSOLE: flexible  
Soft leather

# ACTIVITY LINE



## Features

For a decade, Podartis has been promoting movement and adapted physical activity. Clinical studies have shown that the shoes Activity significantly improve the parameters of gait and posture.

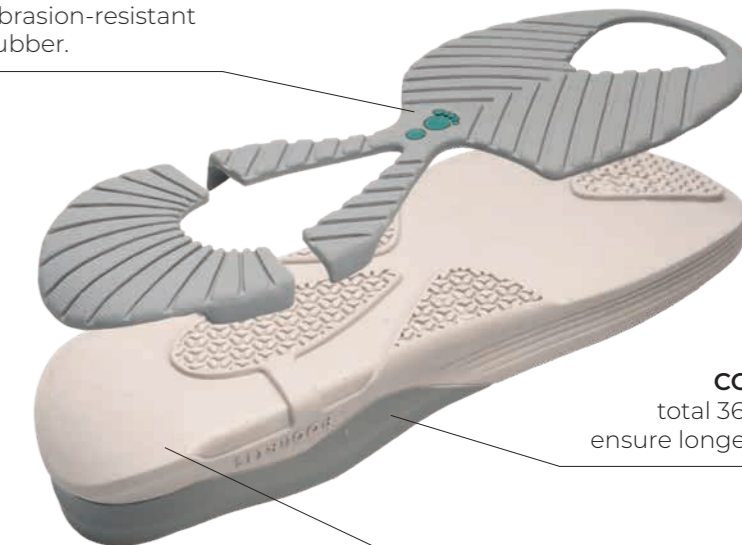
Key features: Seamless upper, stabilizing and extended spurs, various fits, semi-rigid biomechanical outsole.

Width  
**12**

Biomechanical outsole  
**SEMIRIGIDA**



**OUTSOLE**  
made of highly  
abrasion-resistant  
rubber.



**COVER**  
total 360° to  
ensure longer life.

**MIDSOLE**  
high density EVA.

- Seamless upper
- Stabilising and extended backcounters
- Different widths



## ACTIVITY / HERO



NEW

### HERO EVO BLACK PA300931

SIZE RANGE: 39-47 / WIDTH: 12  
OUTSOLE: semirigid  
Faux leather + stretch + nylon



CARRY OVER FW23

### HERO EVO MILITARY GREEN PA30069

SIZE RANGE: 39-47 / WIDTH: 12  
OUTSOLE: semirigid  
Faux leather + stretch + nylon



## ACTIVITY / ZEPHYR



NEW

### ZEPHYR LEATHER NIGHT GREY PA211188

SIZE RANGE: 39-41 / WIDTH: 12  
OUTSOLE: semirigid  
Soft artificial leather + tecnofilm



CARRY OVER FW23

### ZEPHYR BLACK PA20387

SIZE RANGE: 39-41 / WIDTH: 12  
OUTSOLE: semirigid  
Faux leather + nylon mesh



NEW

### ZEPHYR LEATHER ARMY GREEN PA211287

SIZE RANGE: 39-41 / WIDTH: 12  
OUTSOLE: semirigid  
Soft faux leather + tecnofilm



CARRY OVER SS24

### PALLADIO DARK GREY PA20478

SIZE RANGE: 35-47 unisex / WIDTH: 12  
OUTSOLE: semirigid  
Nylon + tecnofilm



NEW

### ZEPHYR LEATHER BROWN PA211183

SIZE RANGE: 39-41 / WIDTH: 12  
OUTSOLE: semirigid  
Soft faux leather + tecnofilm

## ACTIVITY / PALLADIO

## ACTIVITY / FREEDOM



CARRY OVER FW22

### FREEDOM EVO WR BLACK PA34509

SIZE RANGE: 35-46 unisex / WIDTH: 12  
OUTSOLE: semirigid  
WR suede + rubberized leather + Flexpell®



## WOMEN'S COLLECTION - FALL / WINTER 2024-2025



**JANET PHYTON  
DARK BROWN**  
SR102573  
SIZE RANGE: 35-42



**JANET PHYTON  
BORDEAUX**  
SR102579  
SIZE RANGE: 35-42



**JANET SELTZ  
DARK BLUE**  
SR102570  
SIZE RANGE: 35-42



**PATRIZIA VICTORIAN  
BLACK**  
SR103921  
SIZE RANGE: 35-42



**PATRIZIA VICTORIAN  
DARK GREEN**  
SR103927  
SIZE RANGE: 35-42



**PATRIZIA DECOR  
DARK BLU**  
SR104920  
SIZE RANGE: 35-42



**PATRIZIA DECOR  
DARK GREY**  
SR104928  
SIZE RANGE: 35-42



**PATRIZIA SELTZ  
DARK BRONZE**  
SR105973  
SIZE RANGE: 35-42



**ARIANNA DOTS  
BLACK**  
SR109671  
SIZE RANGE: 35-42



**ARIANNA DOTS  
BORDEAUX**  
SR109679  
SIZE RANGE: 35-42



**ARIANNA DOTS  
DARK BLUE**  
SR109770  
SIZE RANGE: 35-42



**ARIANNA DOTS  
DARK GREY**  
SR109778  
SIZE RANGE: 35-42



**ARIANNA SELTZ  
DARK BLUE**  
SR109670  
SIZE RANGE: 35-42



**ARIANNA SELTZ  
DARK BRONZE**  
SR109673  
SIZE RANGE: 35-42



**ARIANNA WOOL EVO  
AVIO BLUE**  
SR109560  
SIZE RANGE: 35-42



**ARIANNA WOOL EVO  
SMOKE GREY**  
SR109559  
SIZE RANGE: 35-42



**ARIANNA COUNTRY  
DARK BEIGE**  
SR109567  
SIZE RANGE: 35-42



**ARIANNA ROCK  
BLACK**  
SR101271  
SIZE RANGE: 35-42



**ARIANNA ROCK  
BLUE**  
SR101270  
SIZE RANGE: 35-42



**ARIANNA ROCK  
DARK BRONZE**  
SR101273  
SIZE RANGE: 35-42



**ALIPAD FLAMBÈ  
DK GREEN BURGUNDY**  
SR101507  
SIZE RANGE: 35-42



**ALIPAD FLAMBÈ  
BLUETTE GREY**  
SR101500  
SIZE RANGE: 35-42



**ALIPAD COSMIC  
NIGHT GREEN**  
SR101337  
SIZE RANGE: 35-42



**ALIPAD COSMIC  
NIGHT BLUE**  
SR101330  
SIZE RANGE: 35-42



**SUSAN PHYTON  
DARK BROWN**  
SR101913  
SIZE RANGE: 35-42



**SUSAN SELTZ  
DARK BLU**  
SR101910  
SIZE RANGE: 35-42

## WOMEN'S COLLECTION - FALL / WINTER 2024-2025

CLASSIC  
WIDTH: 10,5-11,5



**STEPHANIE II DOTS  
BLACK**  
SR218311  
SIZE RANGE: 35-42



**STEPHANIE II DOTS  
DARK GREY**  
SR218318  
SIZE RANGE: 35-42



**LISA II  
BLACK**  
SR218234  
SIZE RANGE: 35-42



**ATLANTA VERNICE  
BLACK**  
SR203621  
SIZE RANGE: 35-41



**ATLANTA  
DARK BROWN**  
SR203833  
SIZE RANGE: 35-41



**ANNA PHYTON  
DARK BROWN**  
SR208226  
SIZE RANGE: 35-41



**DOROTHY  
BLACK**  
SR220131  
SIZE RANGE: 36-42



**DOROTHY  
DARK GREY**  
SR220133  
SIZE RANGE: 36-42



**SHARON PATENT  
BLACK**  
SR401701  
SIZE RANGE: 36-42



**SHARON  
DARK SILVER**  
SR401708  
SIZE RANGE: 36-42



**TRACY  
BLACK**  
SR601721  
SIZE RANGE: 36-42



**TRACY  
DARK BRONZE**  
SR601733  
SIZE RANGE: 36-42



**CHER  
BLACK**  
SR501711  
SIZE RANGE: 36-42



**SIENNA LEATHER  
BLACK**  
SR401231  
SIZE RANGE: 36-42



**SIENNA LEATHER  
GREY BLUE**  
SR401238  
SIZE RANGE: 36-42

SNEAKERS CITY  
WIDTH: 10-11



**SHELLY VELCRO  
LEATHER BLACK**  
SR716491  
SIZE RANGE: 35-41



**SHELLY VELCRO  
LEATHER DARK GREY**  
SR716498  
SIZE RANGE: 35-41



**SHELLY LACE  
LEATHER DARK BLU**  
SR715490  
SIZE RANGE: 35-41



**VIA LEATHER  
BLACK**  
SA24476  
SIZE RANGE: 35-41



**VIA LEATHER  
DARK BROWN**  
SA24483  
SIZE RANGE: 35-41



**VIA LEATHER  
IRON GREY**  
SA24488  
SIZE RANGE: 35-41



**DEAMBULO SPORT  
SHINE BLACK**  
SA301  
SIZE RANGE: 35-41

DEAMBULO  
WIDTH: 12

## WOMEN'S COLLECTION - FALL / WINTER 2024-2025

ACTIVITY  
WIDTH: 11-12



**GINGER VELCRO LEATHER BLACK**  
PA201871  
SIZE RANGE: 35-42



**GINGER VELCRO DARK BLUE**  
PA201870  
SIZE RANGE: 35-42



**GINGER VELCRO NIGHT GREEN**  
PA201877  
SIZE RANGE: 35-42



**FANCY EVO LEATHER BLACK**  
PA201371  
SIZE RANGE: 35-42



**FANCY EVO NIGHT GREEN**  
PA201377  
SIZE RANGE: 35-42



**ZEPHYR W LEATHER DARK GOLD**  
PA211187  
SIZE RANGE: 35-42



**ZEPHYR W SHINE BLACK**  
PA212281  
SIZE RANGE: 35-42



**ZEPHYR SHINE BLUE**  
PA212282  
SIZE RANGE: 35-42



**ZEPHYR W SHINE BURGUNDY**  
PA212289  
SIZE RANGE: 35-42



**PALLADIO DARK GREY**  
PA20478  
SIZE RANGE: 36-48 UNISEX



**FREEDOM EVO WR BLACK**  
PA34509  
SIZE RANGE: 36-46 UNISEX



## MEN'S COLLECTION - FALL / WINTER 2024-2025

CLASSIC  
WIDTH: 11-12-14



**ALAN BROWN**  
SR213133  
SIZE RANGE: 39-47



**ALAN DARK GREY**  
SR213138  
SIZE RANGE: 39-47



**LEONARDO BLACK**  
SR30281  
SIZE RANGE: 40-46



**TURNER VELCRO BLACK**  
PA381471  
SIZE RANGE: 39-47



**TURNER LACE BLACK**  
PA381271  
SIZE RANGE: 39-47



**TURNER LACE BRANDY**  
PA381273  
SIZE RANGE: 39-47



**TURNER LACE DARK BROWN**  
PA381275  
SIZE RANGE: 39-47



**TIZIANO 11 ZIP BLACK**  
SD330231  
SIZE RANGE: 39-47



**TIZIANO 14 ZIP BLACK**  
SD320521  
SIZE RANGE: 39-47



**MARTIN DARK BLUE**  
PA382170  
SIZE RANGE: 39-47



**MARTIN LEATHER BLACK**  
PA382171  
SIZE RANGE: 39-47



**BOTERO 14 RIGID BLACK**  
SD370221  
SIZE RANGE: 39-46



**BOTERO 14 SEMIRIGID BLACK**  
SD370221  
SIZE RANGE: 39-46



**DARWIN VELCRO LEATHER BLACK**  
SR320444  
SIZE RANGE: 39-47



**BOTERO 11 CLAY BROWN**  
SD370235  
SIZE RANGE: 39-47



**BOTERO 11 BLACK**  
SD370291  
SIZE RANGE: 39-47



**HERO EVO BLACK**  
PA300931  
SIZE RANGE: 39-47



**HERO EVO MILITARY GREEN**  
PA30069  
SIZE RANGE: 39-47



**ZEPHYR LEATHER NIGHT GREY**  
PA211188  
SIZE RANGE: 39-41



**ZEPHYR LEATHER ARMY GREEN**  
PA211287  
SIZE RANGE: 39-41



**ZEPHYR LEATHER BROWN**  
PA211183  
SIZE RANGE: 39-41



**ZEPHYR BLACK**  
PA20387  
SIZE RANGE: 39-41



**PALLADIO DARK GREY**  
PA20478  
SIZE RANGE: 36-48 UNISEX



**FREEDOM EVO WR BLACK**  
PA34509  
SIZE RANGE: 36-46 UNISEX

DEAMBULO  
WIDTH: 12



**DEAMBULO L LEATHER BLACK**  
SA201  
SIZE RANGE: 39-47



**DEAMBULO L DARK GREY**  
SA205  
SIZE RANGE: 39-47

ACTIVITY  
WIDTH: 12





VIA ERIZZO 123/C  
31035 - CROCETTA DEL MONTELLO  
TREVISO - ITALY  
TEL. +39 0423 293111  
FAX. 0423 622062

[SALES@PODARTIS.COM](mailto:SALES@PODARTIS.COM)  
[WWW.PODARTIS.COM](http://WWW.PODARTIS.COM)

